

DVD Player

DVP3560K

Service

DVP3560K/55

Service

Service



Service Manual

TABLE OF CONTENTS

	Page
. Technical Specifications.....	1-2
. Safety Instruction, Warning & Notes.....	1-3
. DFU Instruction.....	2-1
. Mechanical and Dismantling Instructions.....	3-1
. Software Upgrades and Region Code Change.....	4-1
. Trouble Shooting Chart.....	5-1
. Wiring Diagram.....	6-1
. Electrical Diagrams and Print-layouts.....	7-1
. Set Mechanical Exploded view & Part list.....	8-1
. Revision List.....	9-1

©Copyright 2010 Philips Consumer Electronics B.V. Eindhoven, The Netherlands
All rights reserved. No part of this publication may be reproduced, stored in a retrieval system or transmitted, in any form or by any means, electronic, mechanical, photocopying, or otherwise without the prior permission of Philips.

**CLASS 1
LASER PRODUCT**

Published by SL - 952 BU AVM Printed in The Netherlands Subject to modification

GB 3141 785 34640

Version 1.0

PHILIPS

Especificaciones



Nota

- Las especificaciones y el diseño quedan sujetos a modificaciones sin previo aviso.

USB

- Compatibilidad: USB (2.0) de alta velocidad
- Clases: UMS (clase de almacenamiento masivo USB)

Video

- Sistema de señal: PAL/NTSC
- Salida de video compuesto: 1 Vpp ~ 75 ohmios
- Salida de video por componentes: 0,7 Vpp ~ 75 ohmios
- Salida HDMI: 480i, 480p, 576i, 576p, 720p, 1080i, 1080p

Audio

- Salida estéreo analógica
- Relación señal/ruido (1 kHz): > 90 dB (ponderado A)
- Rango dinámico (1 kHz): > 80 dB (Ponderado A)
- Interferencia (1 kHz): > 80 dB
- Distorsión / ruido (1 kHz): > 65 dB
- MPEG MP3: MPEG Audio L3
- Salida digital
 - Coaxial
- Salida HDMI

Unidad principal

- Dimensiones (An x Al x Pr): 360 x 39 x 209 (mm)
- Peso neto: 1,4 kg aproximadamente

Energía

- Clasificación de la fuente de alimentación: 110 - 240 V, 50/60 HZ
- Consumo de energía: <10 W
- Consumo de energía en el modo de espera: < 0,45 W

Accesorios incluidos

- Control remoto y baterías
- Cable HDMI
- Cables de audio/video
- Cable de suministro eléctrico de CA
- Adaptador de cable de alimentación
- Manual del usuario

Especificación de láser

- Tipo: láser semiconductor InGaAIP (DVD), AlGaAs (CD)
- Longitud de onda: 658 nm (DVD), 790 nm (CD)
- Potencia de salida: 7,0 mW (DVD), 10,0 mW (VCD/CD)
- Divergencia de haz: 60 grados

Safety instruction, Warning & Notes

Safety instruction

1. General safety

Safety regulations require that during a repair:

- . Connect the unit to the mains via an isolation transformer.
- . Replace safety components indicated by the symbol ▲, only by components identical to the original ones. Any other component substitution (other than original type) may increase risk of fire or electrical shock hazard.

Safety regulations require that after a repair, you must return the unit in its original condition. Pay, in particular, attention to the following points:

- . Route the wires/cables correctly, and fix them with the mounted cable clamps.
- . Check the insulation of the mains lead for external damage.
- . Check the electrical DC resistance between the mains plug and the secondary side:
 - 1) Unplug the mains cord, and connect a wire between the two pins of the mains plug.
 - 2) Set the mains switch the "on" position (keep the mains cord unplug).
 - 3) Measure the resistance value between the mains plug and the front panel, controls, and chassis bottom.
 - 4) Repair or correct unit when the resistance measurement is less than 1MΩ.
 - 5) Verify this, before you return the unit to the customer/user (ref. UL-standard no. 1492).
 - 6) Switch the unit "off", and remove the wire between the two pins of the mains plug.

2. Laser safety

This unit employs a laser. Only qualified service personnel may remove the cover, or attempt to service this device (due to possible eye injury).

Laser device unit

Type	: Semiconductor laser GaAIAs
Wavelength	: 650nm (DVD)
	: 780nm (VCD/CD)
Output power	: 7mW (DVD)
	: 10mW (DVD /CD)

Beam divergence: 60 degree

Note: Use of controls or adjustments or performance of procedure other than those specified herein, may result in hazardous radiation exposure. Avoid direct exposure to beam.

Warning

1. General

. All ICs and many other semiconductors are susceptible to electrostatic discharges (ESD). Careless handling during repair can reduce life drastically. Make sure that, during repair, you are at the same potential as the mass of the set by a wristband with resistance. Keep components and tools at this same potential. Available ESD protection equipment:

- 1) Complete kit ESD3 (small tablemat, wristband, connection box, extension cable and earth cable) 4822 310 10671.
- 2) Wristband tester 4822 344 13999.

. Be careful during measurements in the live voltage section. The primary side of the power supply, including the heat sink, carries live mains voltage when you connect the player to the mains (even when the player is "off!"). It is possible to touch copper tracks and/or components in this unshielded primary area, when you service the player. Service personnel must take precautions to prevent touching this area or components in this area. A "lighting stroke" and a stripe-marked printing on the printed wiring board, indicate the primary side of the power supply.

. Never replace modules, or components, while the unit is "on".

2. Laser

- . The use of optical instruments with this product, will increase eye hazard.
- . Only qualified service personnel may remove the cover or attempt to service this device, due to possible eye injury.
- . Repair handling should take place as much as possible with a disc loaded inside the player.
- . Text below is placed inside the unit, on the laser cover shield:


CAUTION: VISIBLE AND INVISIBLE LASER RADIATION WHEN OPEN, AVOID EXPOSURE TO BEAM.

Notes: Manufactured under licence from Dolby Laboratories. The double-D symbol is trademarks of Dolby Laboratories, Inc. All rights reserved.

Notes

Lead-Free requirement for service

IDENTIFICATION:

Regardless of special logo (not always indicated) 

One must treat all sets from 1.1.2005 onwards, according next rules.

Important note: In fact also products a little older can also be treated in this way as long as you avoid mixing solder-alloys (leaded/ lead-free). So best to always use SAC305 and the higher temperatures belong to this.

Due to lead-free technology some rules have to be respected by the workshop during a repair:

- Use only lead-free solder alloy Philips SAC305 with order code 0622 149 00106. If lead-free solder-paste is required, please contact the manufacturer of your solder-equipment. In general use of solder-paste within workshops should be avoided because paste is not easy to store and to handle.
 - Use only adequate solder tools applicable for lead-free solder alloy. The solder tool must be able
 - To reach at least a solder-temperature of 400°C,
 - To stabilize the adjusted temperature at the solder-tip
 - To exchange solder-tips for different applications.
 - Adjust your solder tool so that a temperature around 360°C – 380°C is reached and stabilized at the solder joint. Heating-time of the solder-joint should not exceed ~ 4 sec. Avoid temperatures above 400°C otherwise wear-out of tips will rise drastically and flux-fluid will be destroyed. To avoid wear-out of tips switch off un-used equipment, or reduce heat.
 - Mix of lead-free solder alloy / parts with leaded solder alloy / parts is possible but PHILIPS recommends strongly to avoid mixed solder alloy types (leaded and lead-free). If one cannot avoid, clean carefully the solder-joint from old solder alloy and re-solder with new solder alloy (SAC305).
- Use only original spare-parts listed in the Service-Manuals. Not listed standard-material (commodities) has to be purchased at external companies.
 - Special information for BGA-ICs:
 - always use the 12nc-recognizable soldering temperature profile of the specific BGA (for de-soldering always use highest lead-free temperature profile, in case of doubt)
 - lead free BGA-ICs will be delivered in so-called 'dry-packaging' (sealed pack including a silica gel pack) to protect the IC against moisture. After opening, dependent of MSL-level seen on indicator-label in the bag, the BGA-IC possibly still has to be baked dry. This will be communicated via AYS-website.
Do not re-use BGAs at all.
 - For sets produced before 1.1.2005, containing leaded soldering-tin and components, all needed spare-parts will be available till the end of the service-period. For repair of such sets nothing changes.
 - On our website:

www.atyourservice.ce.Philips.com

You find more information to:

 - BGA-de-/soldering (+ baking instructions)
 - Heating-profiles of BGAs and other ICs used in Philips-sets

You will find this and more technical information within the "magazine", chapter "workshop news".
For additional questions please contact your local repair-helpdesk.

QSG for DVP3560K/55:

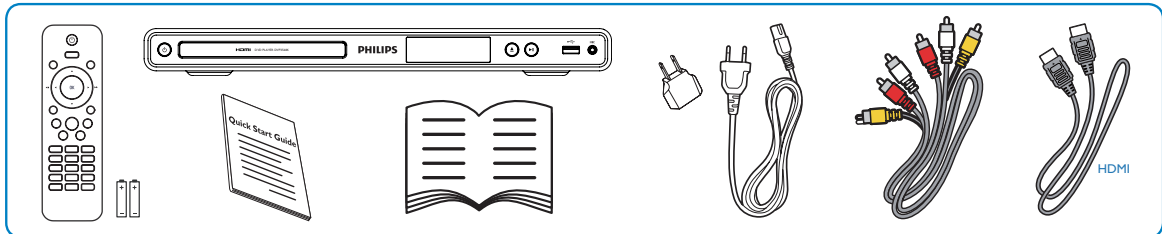
Register your product and get support at

www.philips.com/welcome

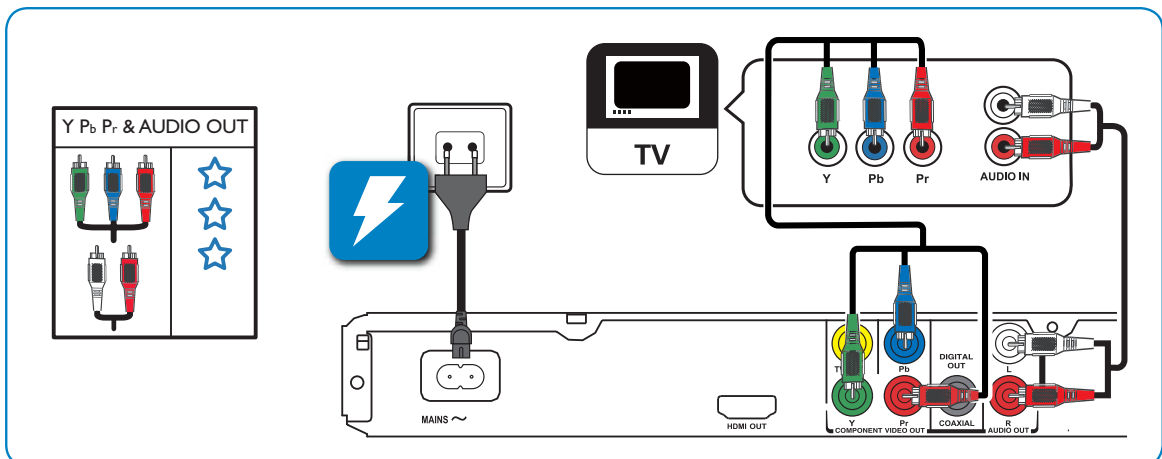
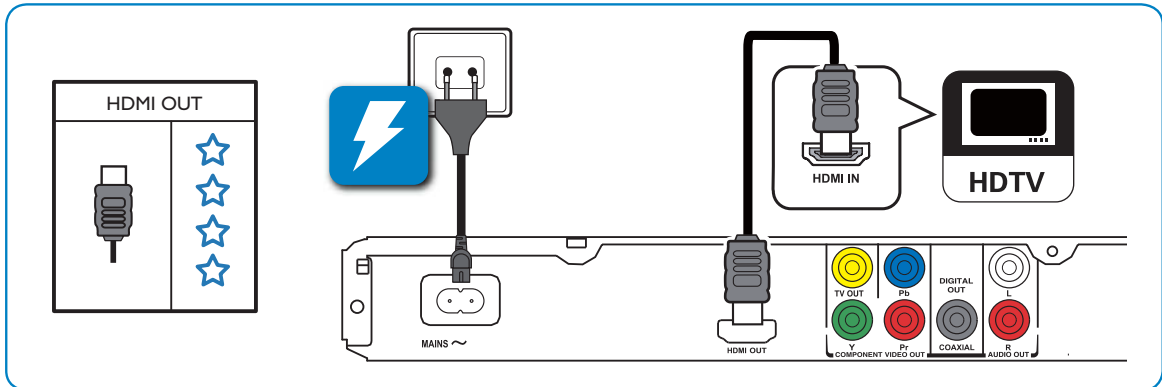
DVP3560K



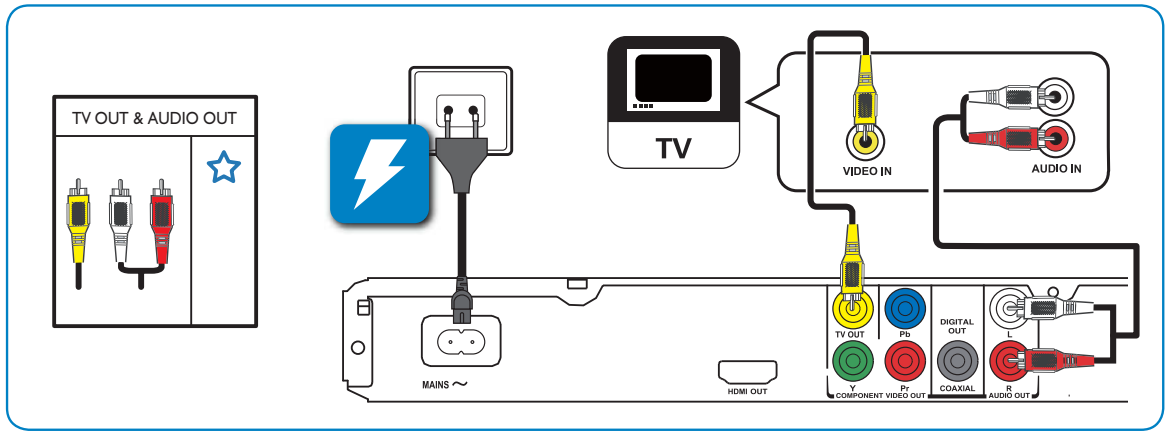
PHILIPS



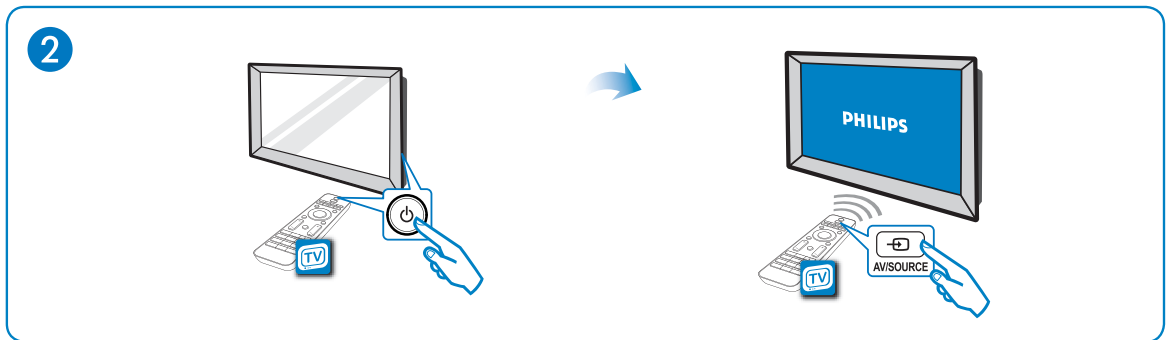
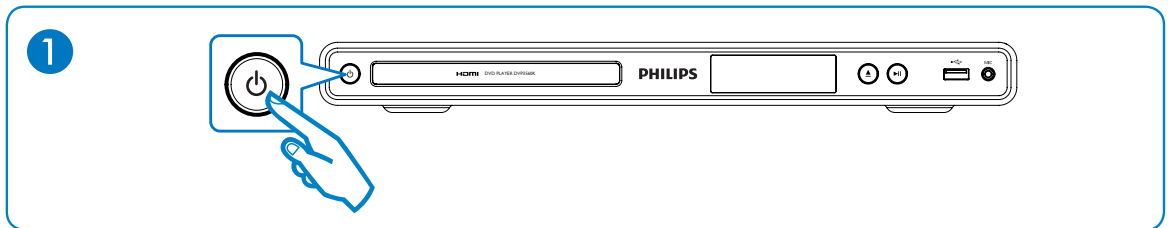
1



1



2

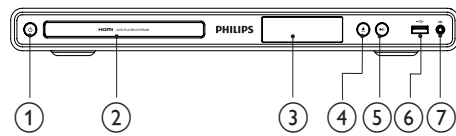



3

General Setup	
Disc Lock	o Auto (ENG)
OSD Language	o English
Sleep Timer	o Español
Auto Standby	o Português
DivX(R) VOD Code	

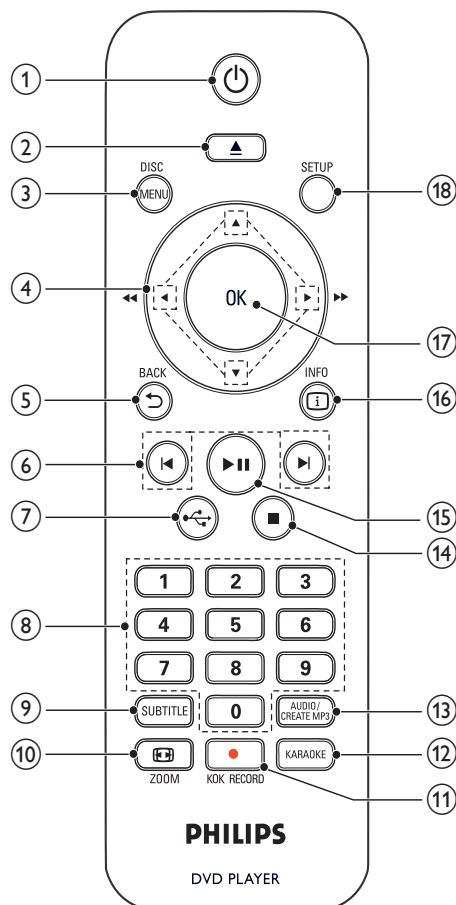
Descripción general del producto





Unidad principal



- ① **⏻ (Modo de espera encendido)**
 - Enciende el reproductor de DVD o pasa al modo de espera.
- ② **Compartimiento para el disco**
- ③ **Panel de visualización**
- ④ **▲ (Abrir/Cerrar)**
 - Abre o cierra la bandeja de discos.
- ⑤ **▶|| (Play/Pause)**
 - Inicia, hace una pausa o reanuda la reproducción del disco.
- ⑥ **Toma  (USB)**
 - Conecta una unidad USB Flash.
- ⑦ **MIC**
 - Conexión de micrófono.

Control remoto



- ① **⏻**
 - Enciende la unidad o pasa al modo de espera.
- ② **▲**
 - Abre o cierra la bandeja de discos.
- ③ **DISC MENU**
 - Accede o sale del menú del disco.
 - Pasa al modo de disco.
 - Durante la reproducción de una secuencia de diapositivas de fotos, permite alternar entre el modo de diversión y el modo simple.
 - Para VCD y SVCD, activa o desactiva el control de reproducción PBC (del inglés Playback Control).
- ④ **▲▼◀▶**
 - Navega a través de los menús.
 - Avanza (▶) o retrocede (◀) rápidamente.
 - Avanza (▲) o retrocede (▼) lentamente.
- ⑤ **↶ BACK**
 - Regresa al menú de pantalla anterior.
- ⑥ **◀▶**
 - Pasa al título, capítulo o pista anterior o siguiente.
- ⑦ ****
 - Pasa al modo de USB.
- ⑧ **Botones numéricos**
 - Selecciona la reproducción de un elemento.
- ⑨ **SUBTITLE**
 - Selecciona el idioma de los subtítulos en un disco.
 - Permite acceder al menú de copia y eliminación de archivos de audio USB.
- ⑩ ** ZOOM**
 - Ajusta el formato de la imagen a la pantalla del televisor.
 - Acerca o aleja la imagen.
- ⑪ ** KOK RECORD**
 - Graba la voz y la música durante el karaoke en un dispositivo flash USB
- ⑫ **KARAOKE**
 - Accede o sale del menú de configuración de karaoke.
- ⑬ **AUDIO/CREATE MP3**
 - Selecciona un canal o idioma de audio en un disco.
 - Permite acceder al menú de creación de archivos MP3.
- ⑭ **■**
 - Detiene la reproducción.
- ⑮ **▶||**
 - Inicia, hace una pausa o reanuda la reproducción del disco.
- ⑯ ** INFO**
 - En discos: permite acceder a las opciones de reproducción o muestra el estado actual del disco.
 - Para diapositivas, muestra una vista en miniatura de archivos de fotos.
- ⑰ **OK**
 - Permite confirmar la entrada o selección.
- ⑱ **SETUP**
 - Accede o sale del menú de configuración.

Mechanical and Dismantling Instructions

Dismantling Instruction

Detailed information please refer to the model set.

The following guidelines show how to dismantle the player.

Step1: Remove 5 screws around the Top Cover, and then remove the Top Cover (Figure 1).

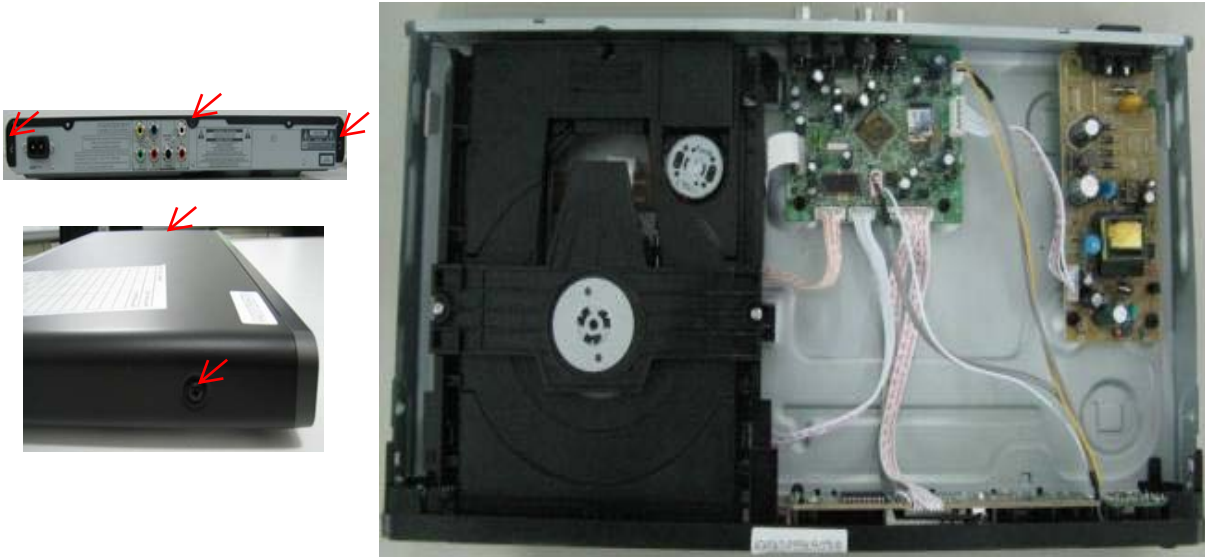


Figure 1

Step2: If it is necessary to dismantle Loader or Front Panel, the Front door should be removed first. (Figure 2)

Note: Make sure to operate gently otherwise the guider would be damaged.



Please kindly note that dismantle the front door assembly carefully to avoid damage tray and the front door.

Figure 2

Mechanical and Dismantling Instructions

Dismantling Instruction

Detailed information please refer to the model set.

Step3: If the tray can't open in normal way, you can make it through the instruction as below (Figure 3).

Note: Make sure to operate gently otherwise the guider would be damaged.



Figure 3

Step4: Dismantling Front Panel, disconnect the connectors (XP80, XP7, XP476), need release 3 snaps of Front Panel & 2 snaps of bottom cabinet , then gently pull the Panel out from the set. (Figure 4 - Figure 6)

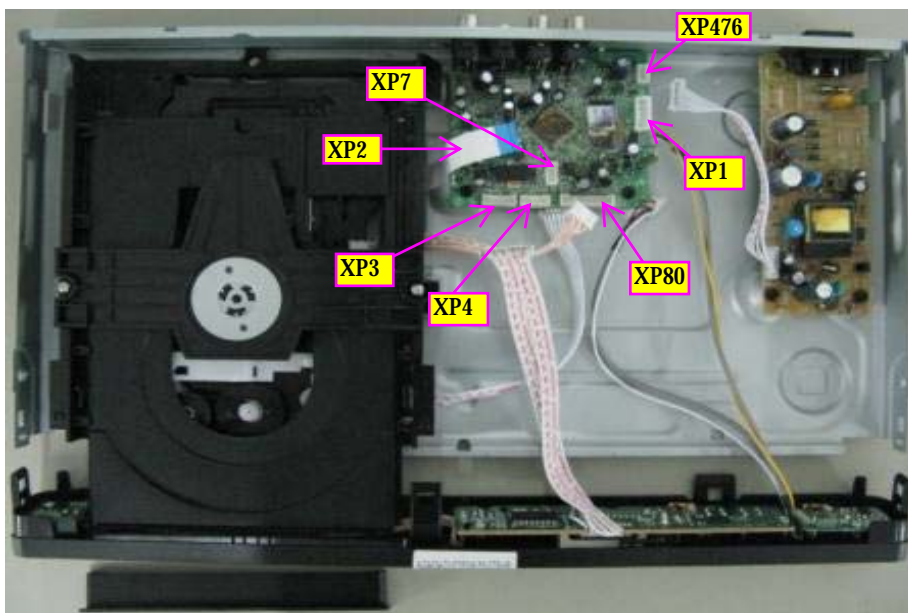


Figure 4

Mechanical and Dismantling Instructions

Dismantling Instruction

Detailed information please refer to the model set.

Step5: Dismantling Loader, disconnect the 3 connectors (XP2, XP3, XP4) aiming in the below figure, and remove 1 screw that connects the loader and the bottom cabinet. (Figure 5)

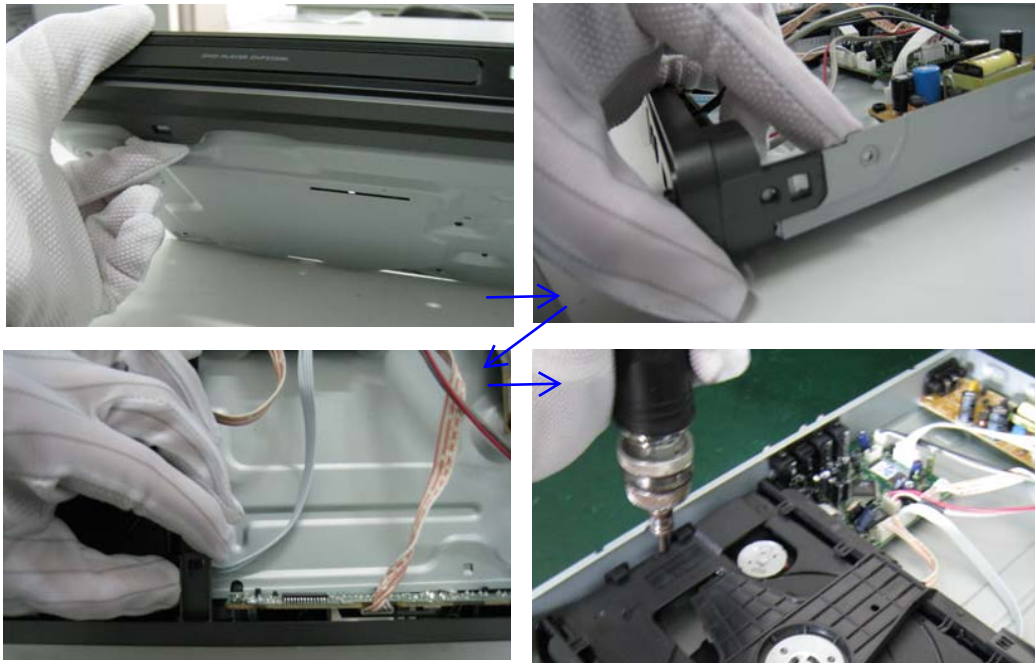


Figure 5

Step6: Dismantling Main Board, first disconnect the connector (XP1), and then remove 4 screws. (Figure 6)

Step7: Remove the 4 screws on Power Board to dismantle the Power Board. (Figure 6)

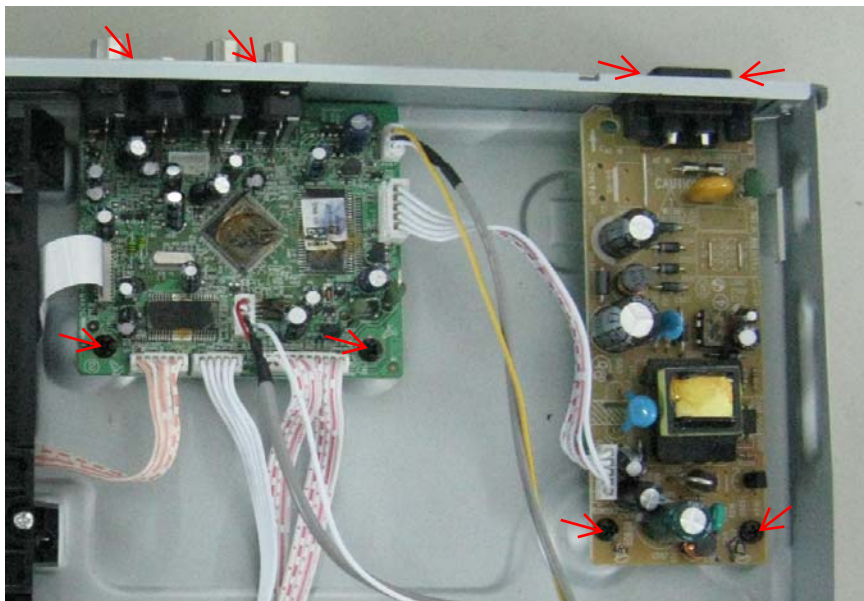


Figure 6

Software upgrade and region code change

Preparation to upgrade software

- 1) Power on the set and open the tray, then press "5"5" on remote control to check the SW File Name.
- 2) Start the CD Burning software and create a new CD project (Data Disc) with the following setting:
Label: DVP3XXX(K) (No need the label name)
SW File Name: DVPXXXX(K)_XX.bin
Note: It is required to keep the SW file name accord.
- 3) Burn the data onto a blank CDR

A. Procedure for software upgrade:

- A) Upgrade software via CDR:
 - 1) Power on the set and insert the prepared Upgrade CDR.
 - 2) The set will starts reading disc & response with the following display TV screen:
Upgrade file detected
Upgrade ?
Press PLAY to start
 - 3) Press "PLAY" button to confirm, then screen will display:
Upgrade file detected Upgrade file detected
Do not power off Do not power off
File Copying → Upgrading
 - 4) The upgraded tray will automatically open when file copying completed, then take out the disc.
 - 5) About 1 minute later, the tray will automatically close when upgrading completed.
- B) Upgrade software via USB Flash Drive:
 - 1) Create the correct software file onto the USB flash drive.
 - 2) Power on the set and keep no disc, then insert it to the USB jack of the front panel.
 - 3) When the DVD player switches to the USB state automatically, pls follow the instructions on the TV screen to confirm the upgrade operation.

B. Read out the software versions to confirm upgrading

- 1) Power on the set and press "Setup" button on the remote control.
- 2) Press "1"3"7"9" button or press down cursor on remote control to select "Preferences" and press right & down cursor to select "Version Info".

The software version and other informations will be displayed on the TV screen as follows:

Version	XX.XX.XX.XX (Main version)
Sub-Ver	XX.XX.XX.XX (version of applicaton software)
8032	XX.XX.XX.XX
Servo	XX.XX.XX.XX (software version of Servo)
RISC	XX.XX.XX.XX
DSP	XX.XX.XX.XX
Region Code	X

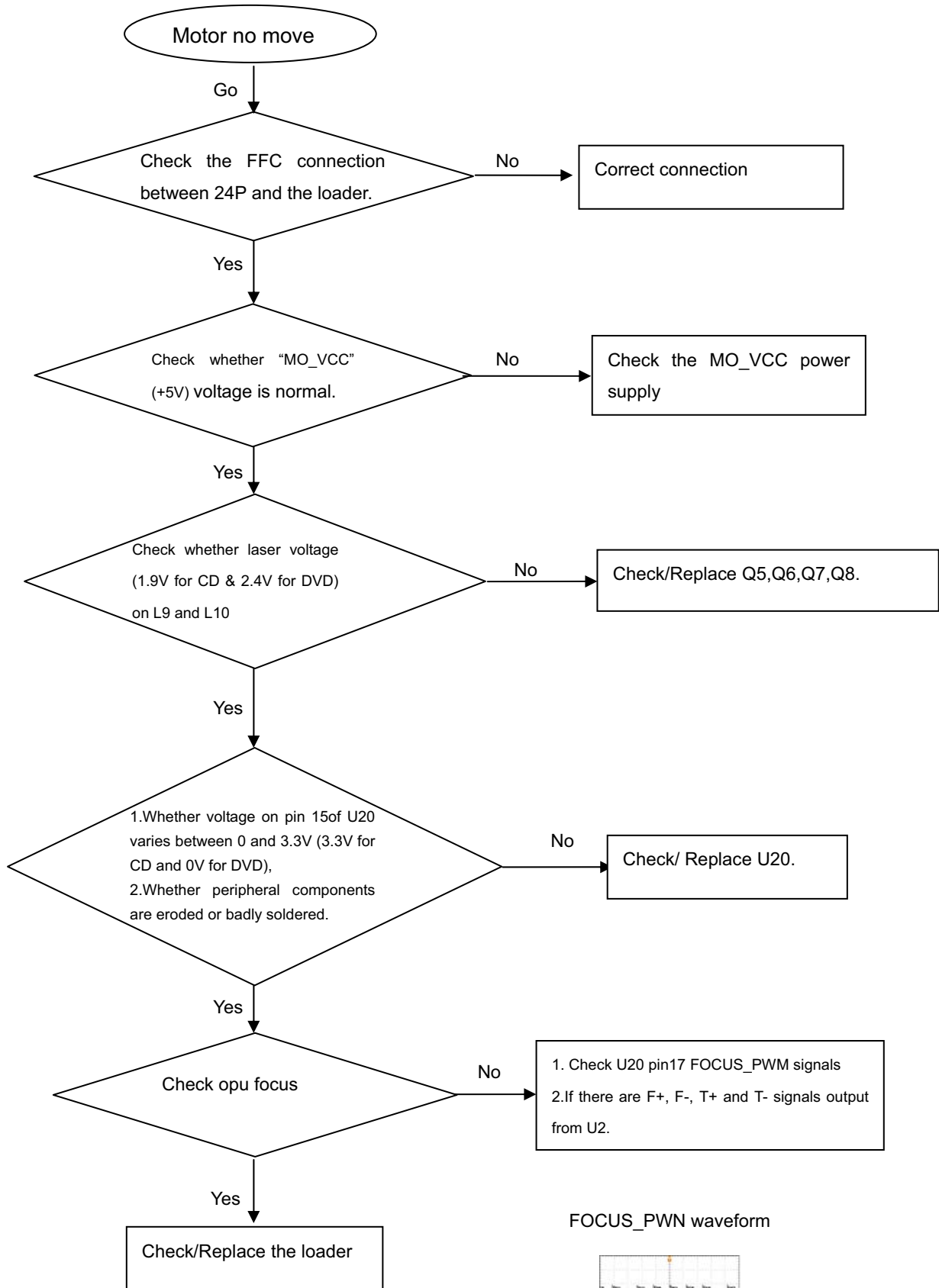
Caution: The set must not be power off during upgrading, Otherwise the Main board will be damaged entirely.

Region Code Change

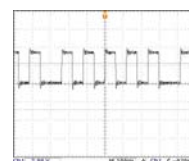
- 1) Power on the set and open the tray door;
- 2) Press the "Setup" button on the remote control, then the setup interface will be displayed on the TV screen;
- 3) Move the down cursor on remote control to select "Preferences" and press "1"3"8"9"3"1" on the remote control;
- 4) Then move the up or down cursor to select the region code.

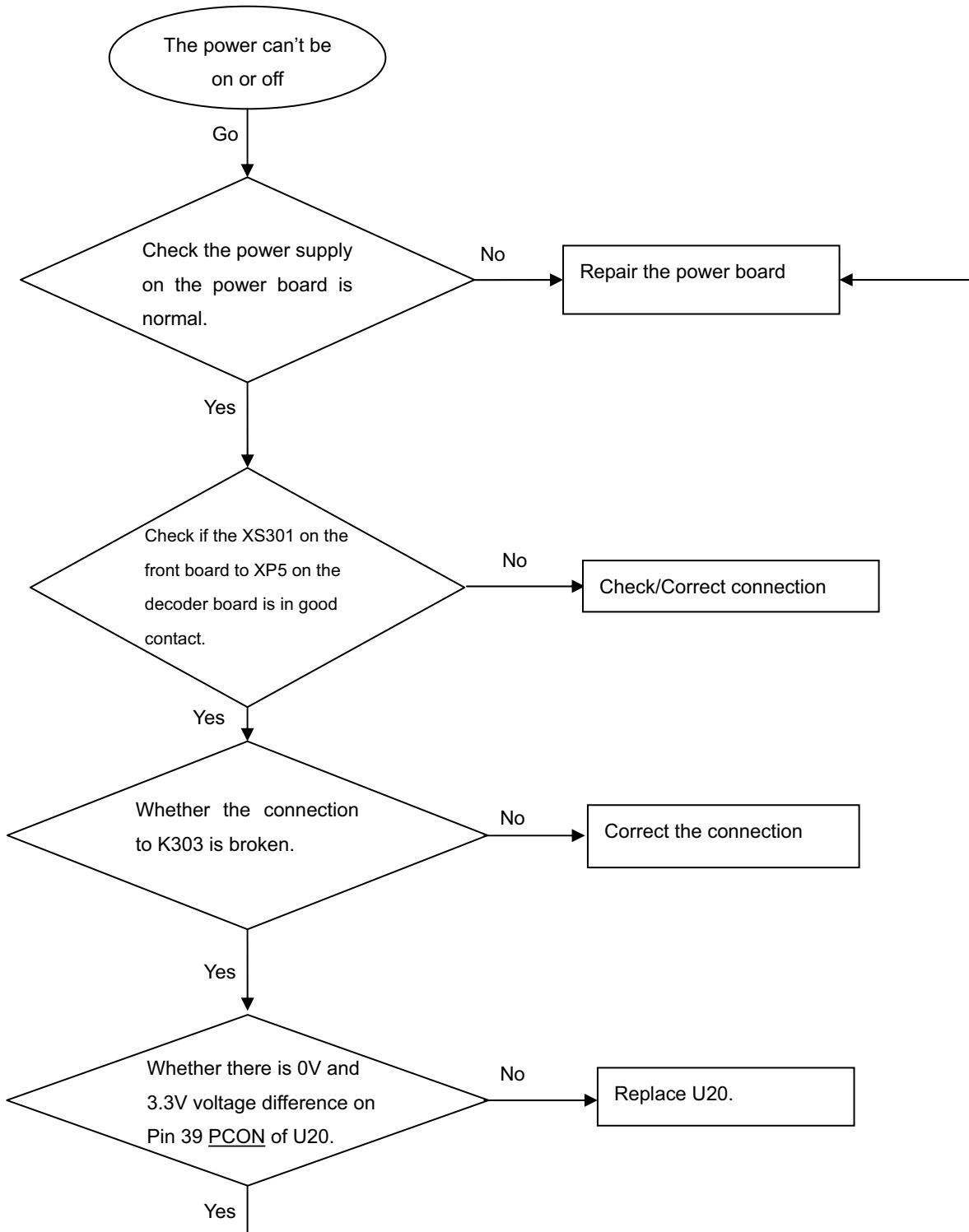
Note: Restart after above steps.

Spindle motor does not move

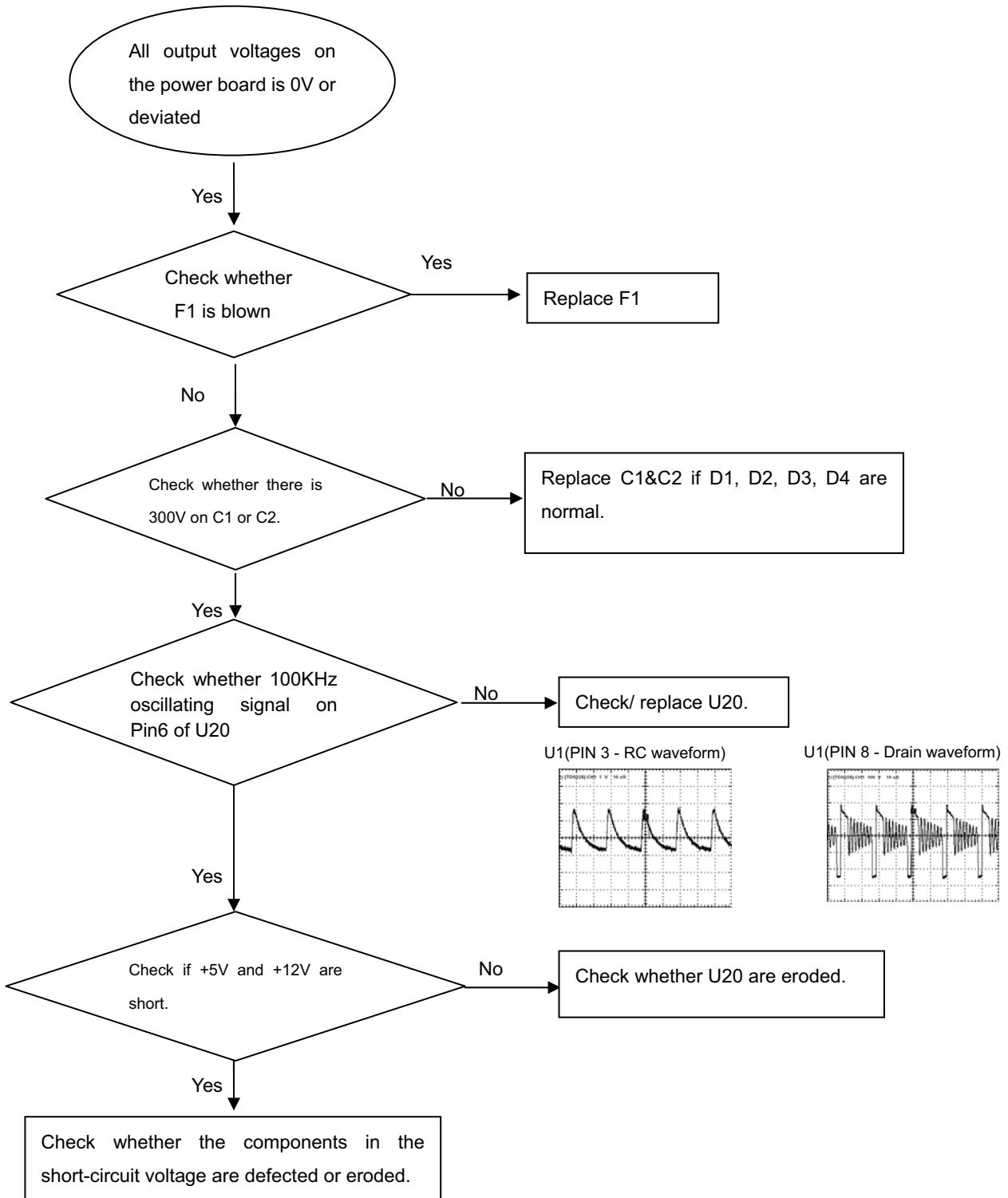


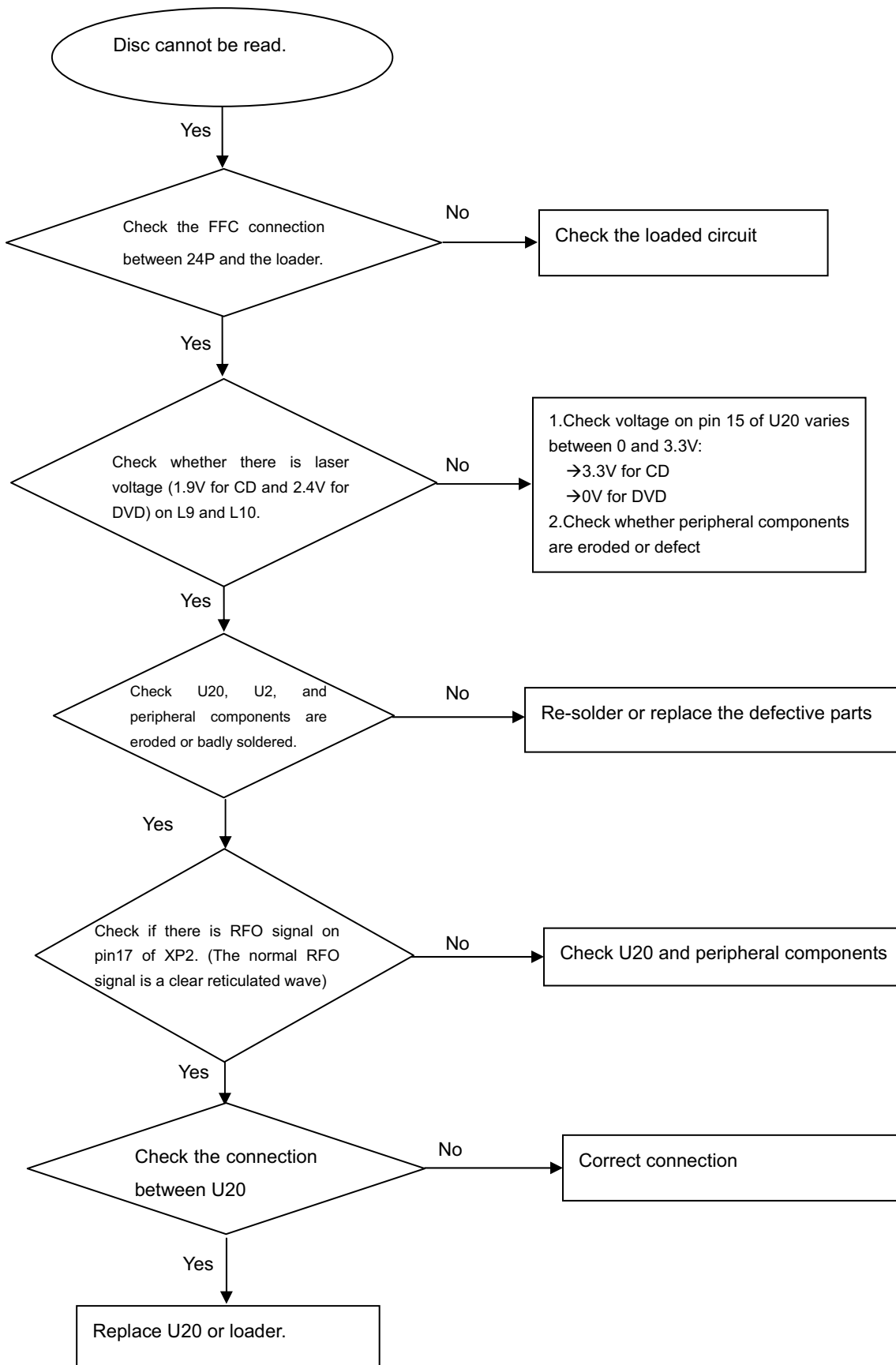
FOCUS_PWN waveform

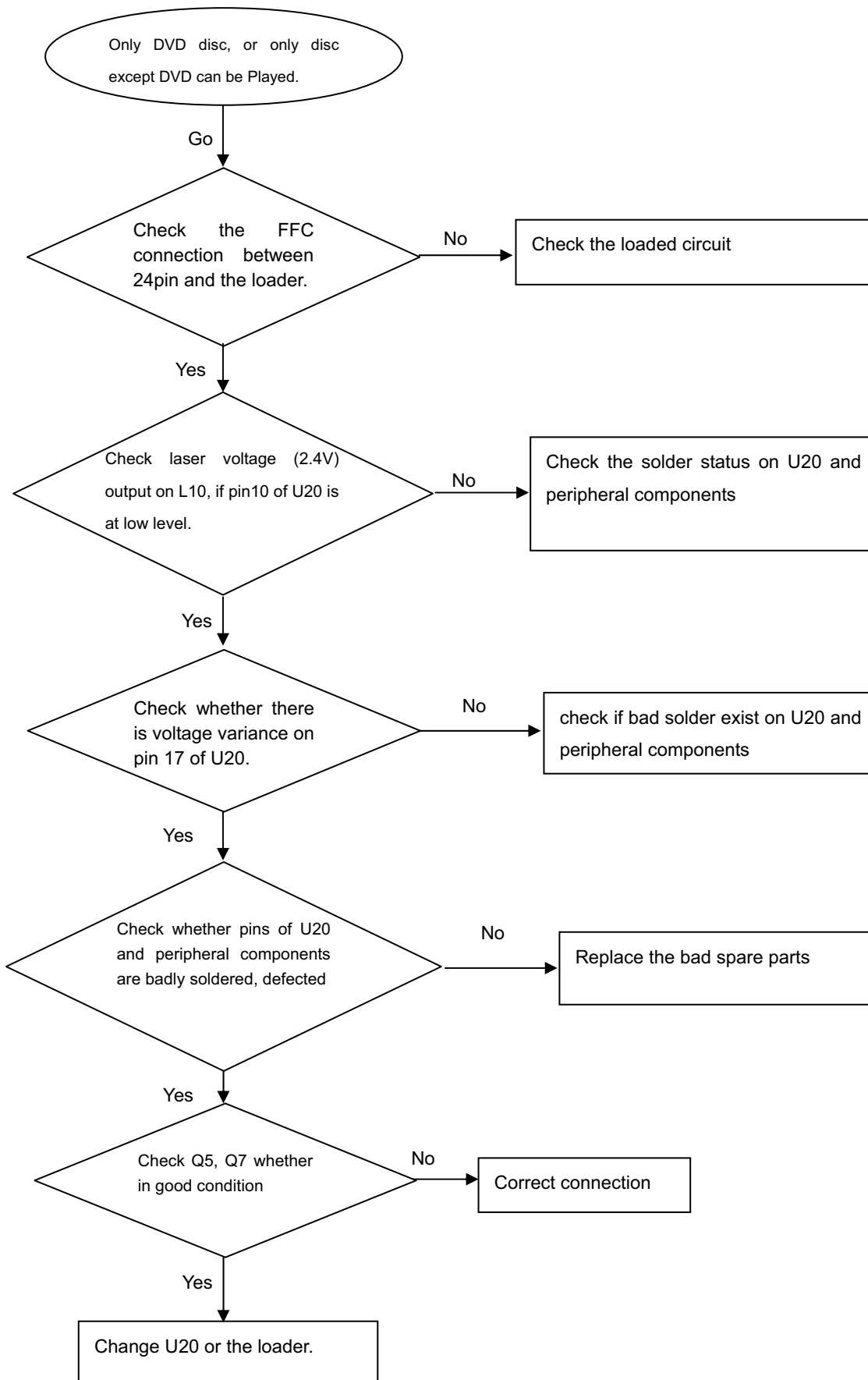


The power can not be on or off

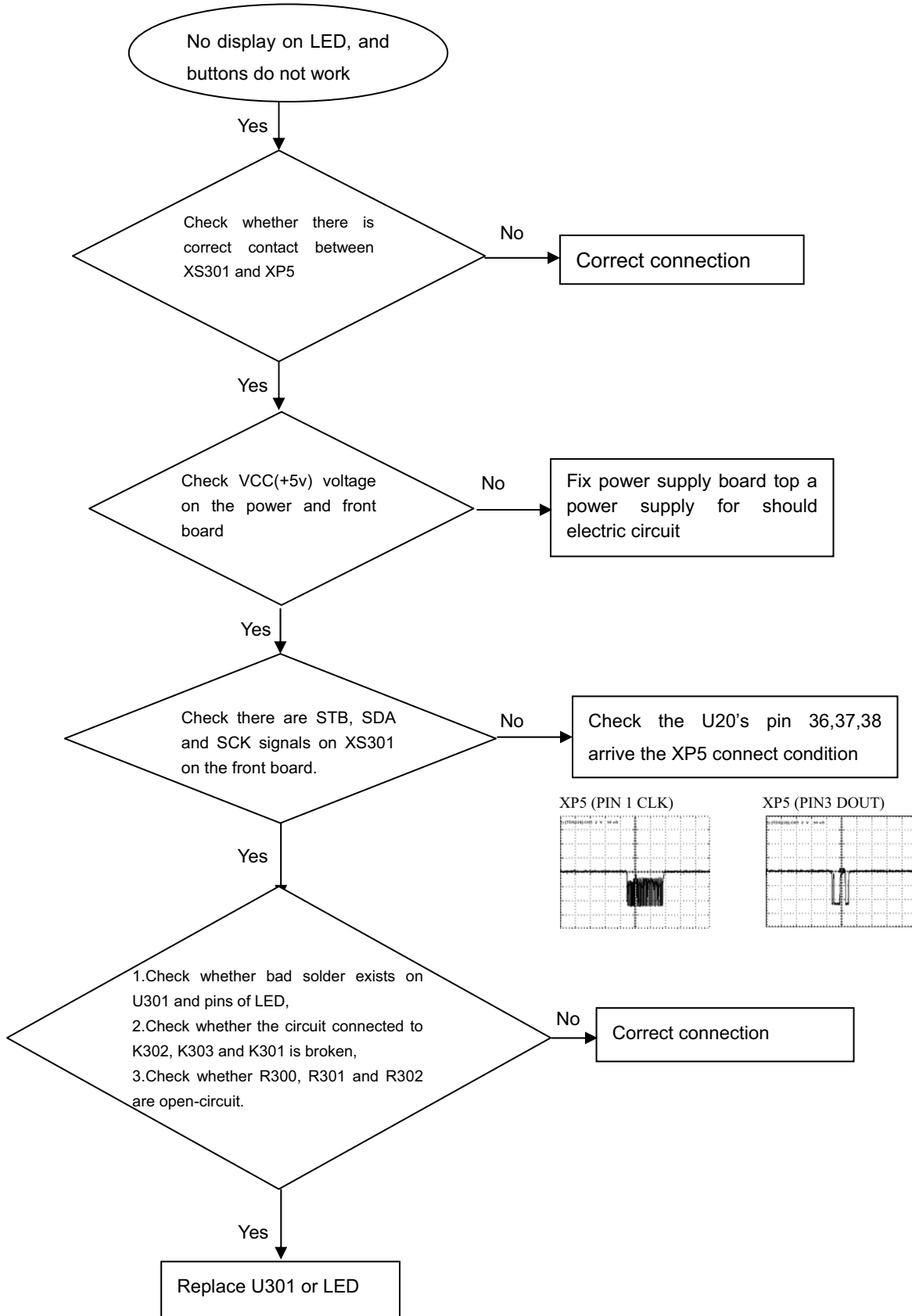
All output voltages on the power board is 0V or deviated.

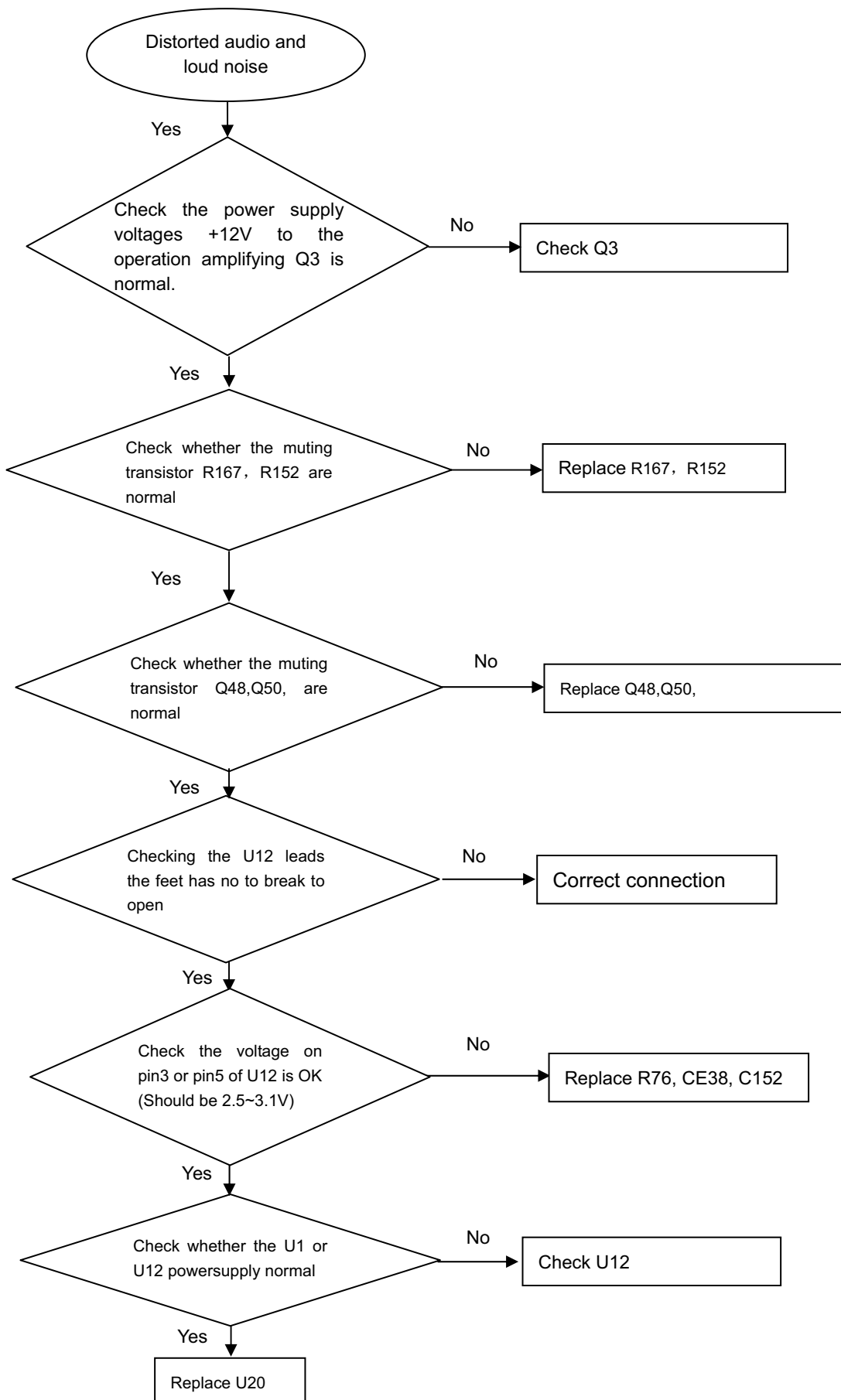


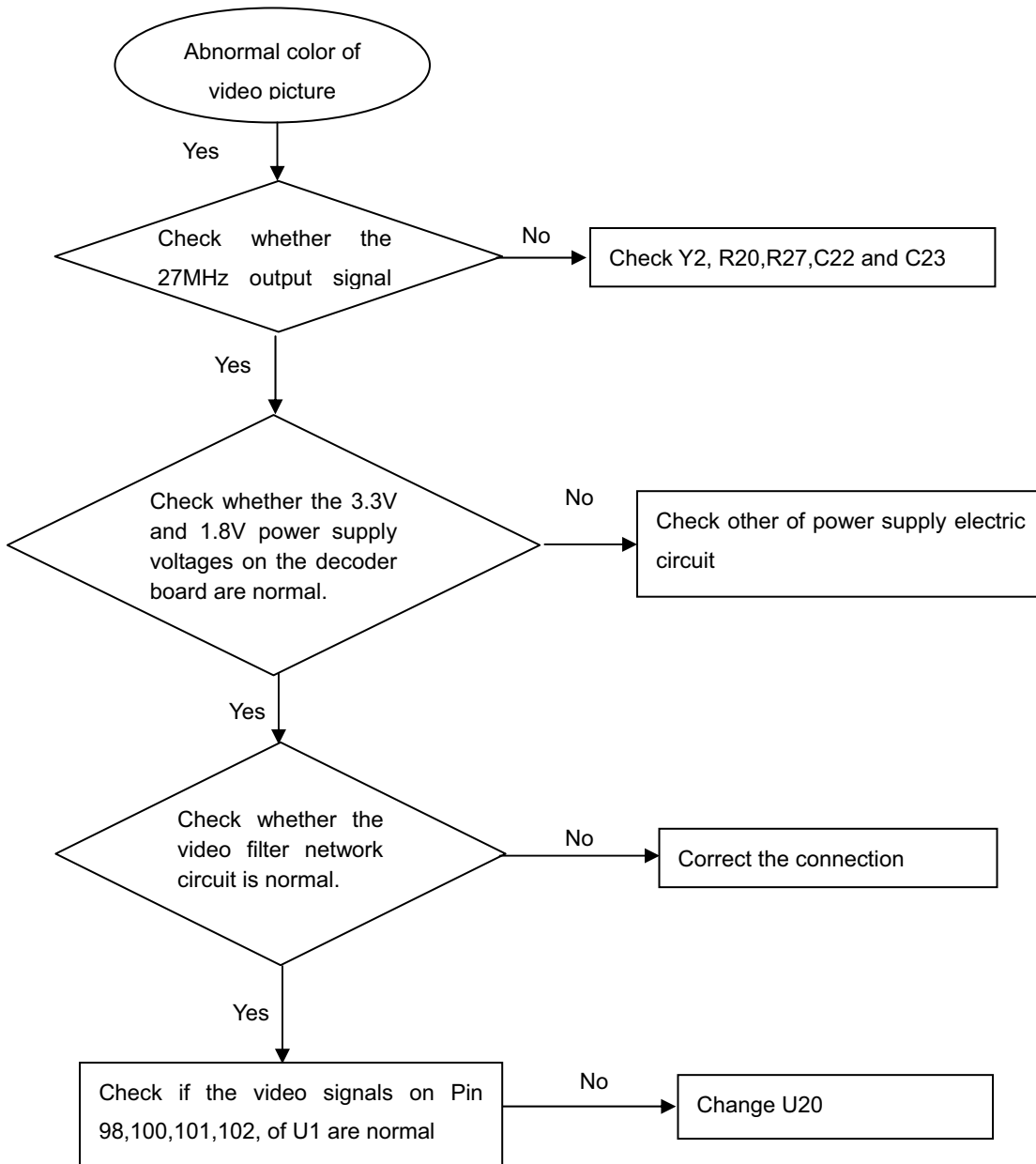
Disc cannot be read.

Only DVD disc or only disc except DVD can be played

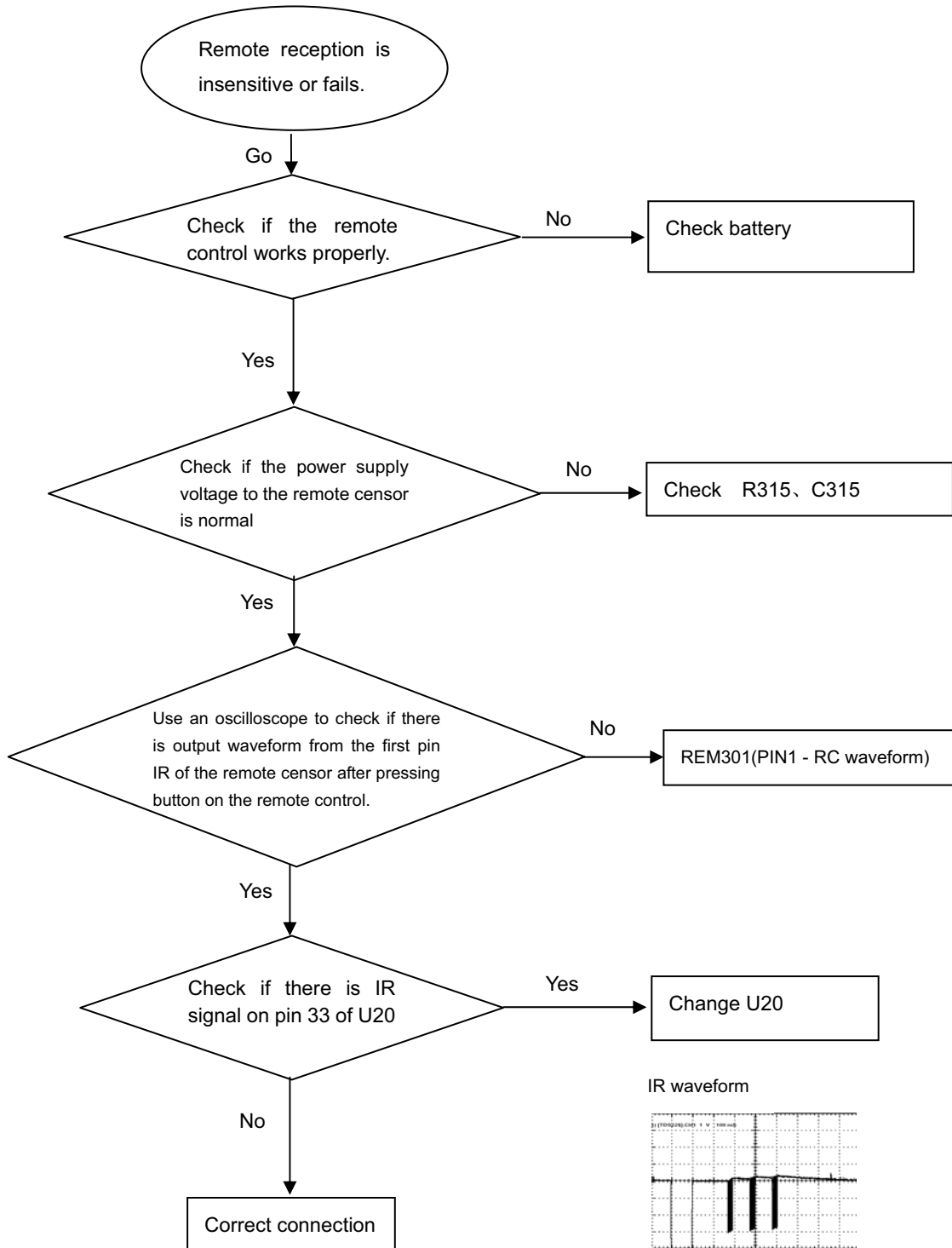
No display on LED, and buttons do not work



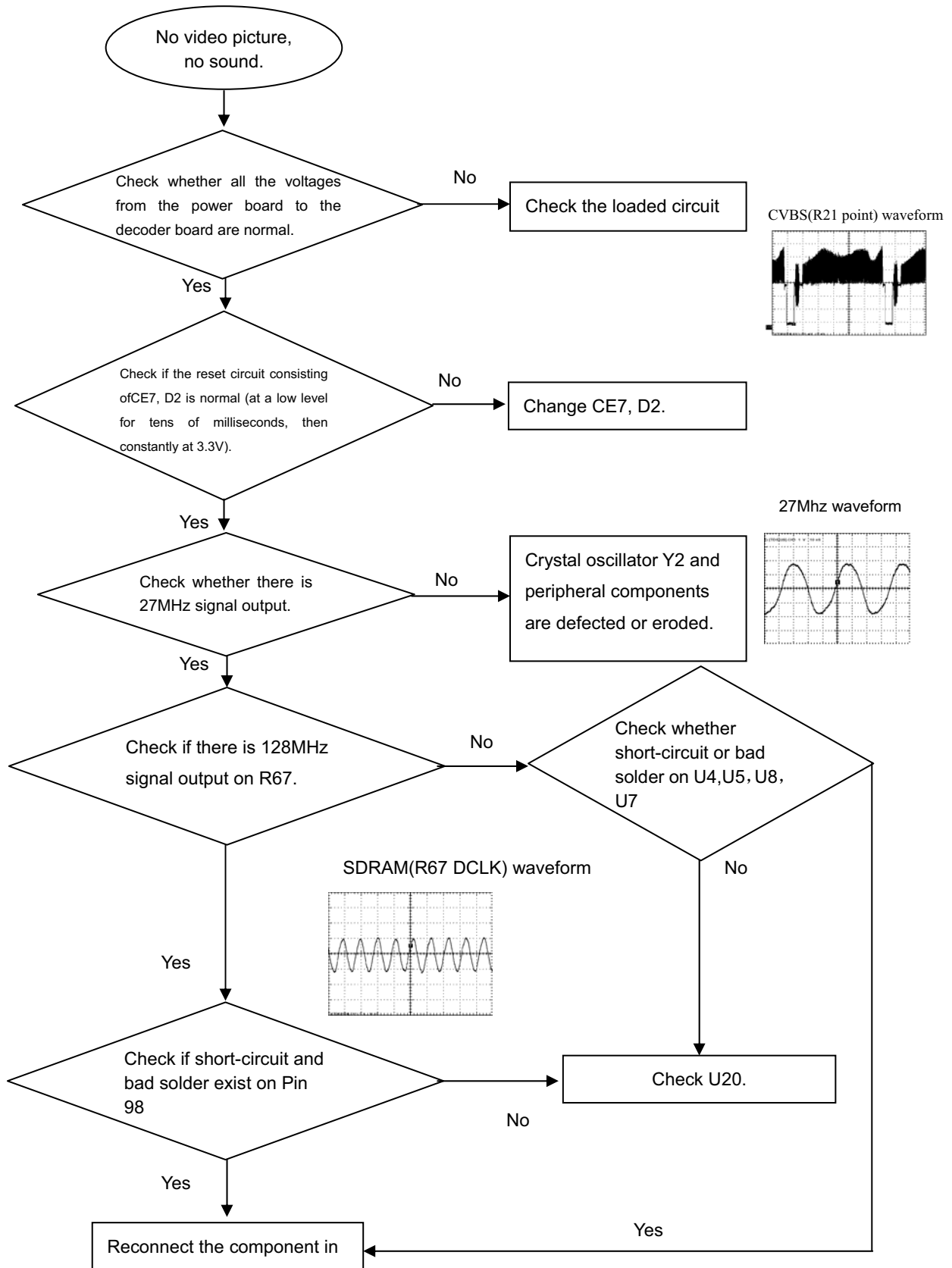
Distorted audio and loud noise

Abnormal color of video picture

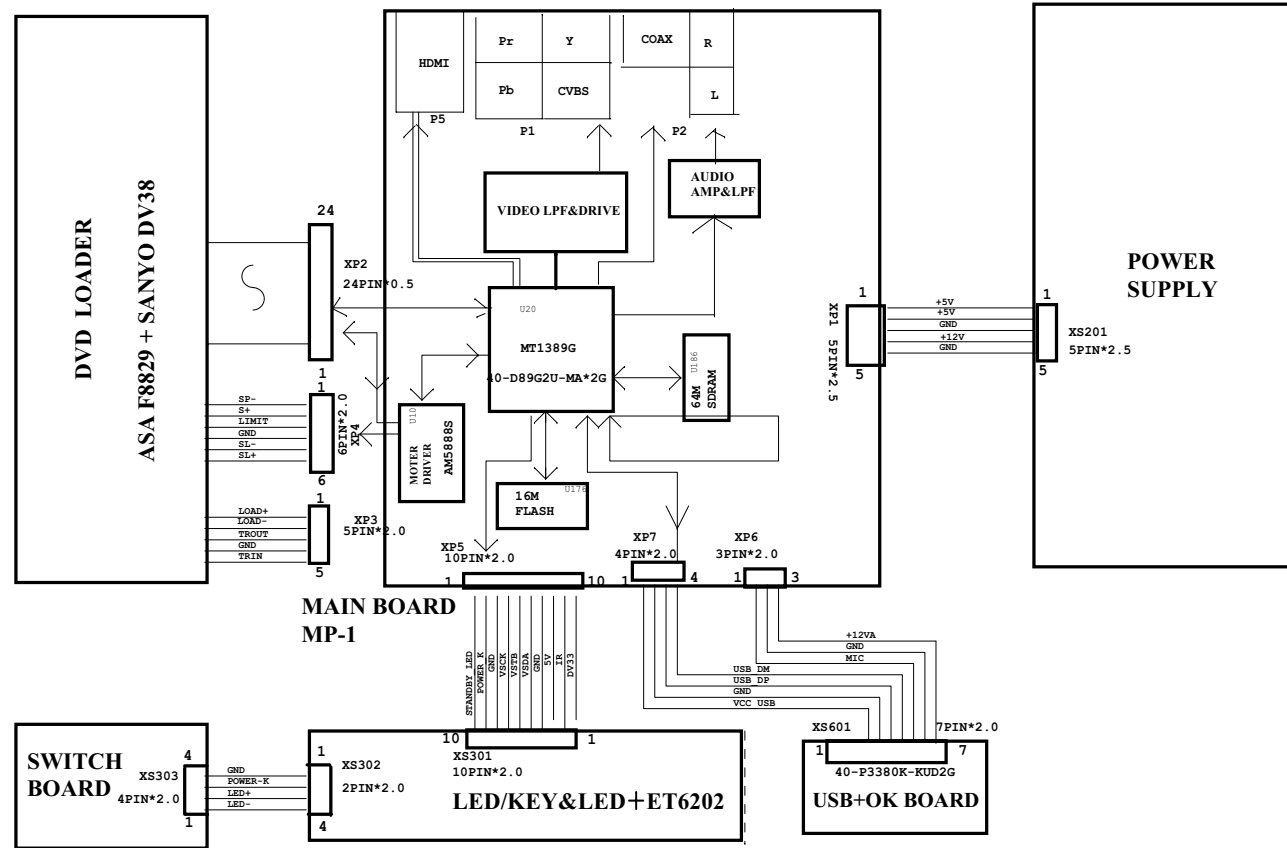
Remote reception is insensitive or fails.



No video picture, no sound.



DVP3560K WIRING DIAGRAM

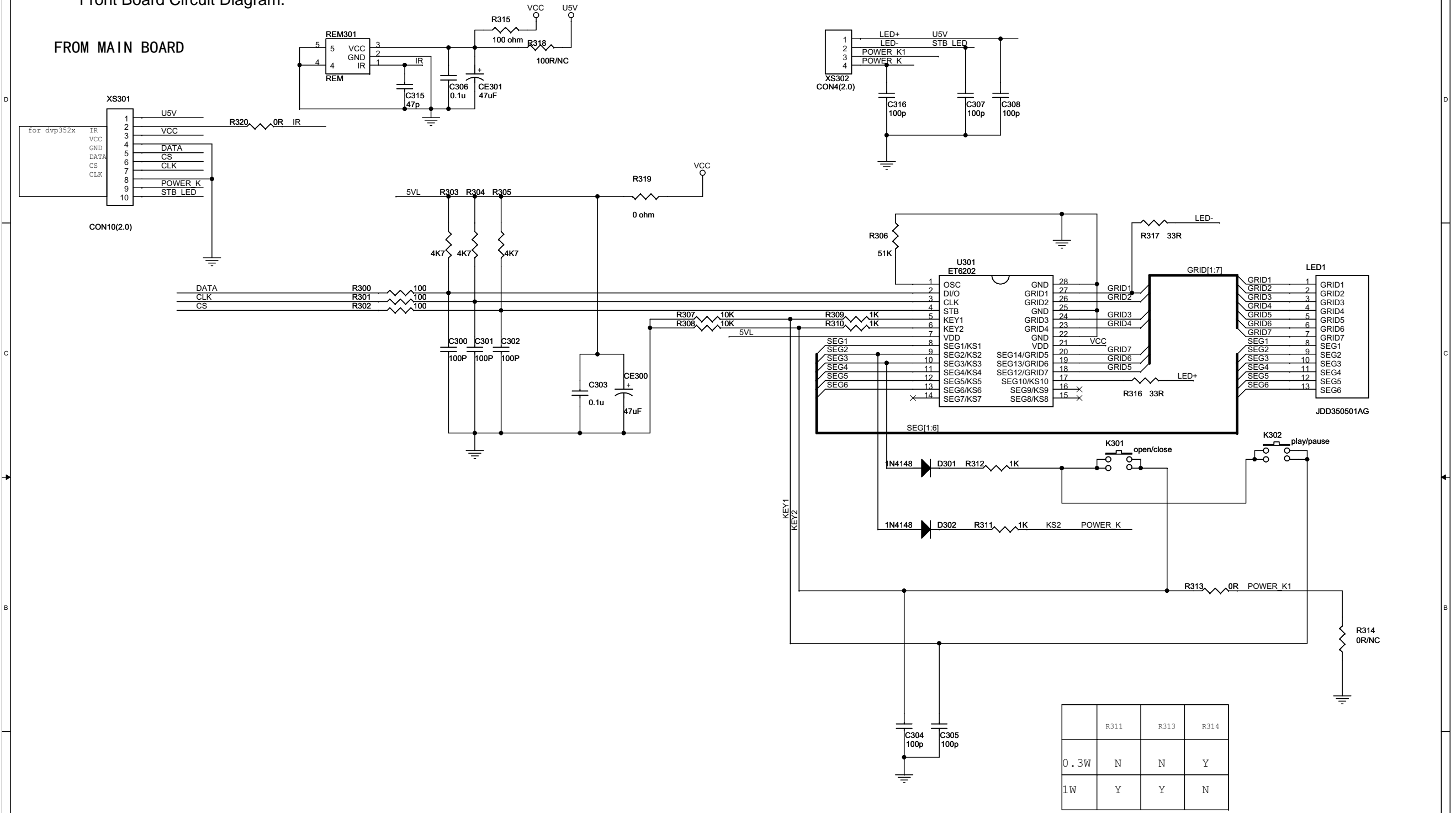


MT1389G 128 PIN GPIO LIST

NAME	PIN	FEATURES	
TRAY_OPEN	14	VR_CD	
TRAY_CLOSE	15	VR_DVD	
FG / GPIO2	18	TRIN	
UP1_6	28	HDM_SCL	
UP1_7	29	HDMI_SDA	
GPIO3	34	U_CEC	
GPIO4	35	VSCK	
GPIO5	7	TRCLOSE	
GPIO6	31	TxD	
GPIO7	39	PCON	STANDBY_LED
GPIO8	38	POWER_K	
GPIO9	37	VSDA	
GPIO10	81	HPD	
GPIO11	30	RxD	
GPIO12	80	SPDIF	
GPIO13	36	VSTB	
GPIO14	96	AUDIO_MUTE	
GPIO19	103		
GPIO20	104	AVCM	
GPIO21	105	AKIN1	
ARF	109	AUDIO_ARF	
ARS	110	AUDIO_ARS	
ALS	114	AUDIO_ALS	
ALF	115	AUDIO_ALF	
GPIO34	107	TROPEN	LDSW
GPIO35	108	STBY	
REFIN / OPOUT	120	LIMIT	TROUT
VIDEO/YUV	98	V_CVBS	
	102	V_R/V	
	101	V_B/U	
	100	V_G/Y	
AR	111	AR	
AL	113	AL	

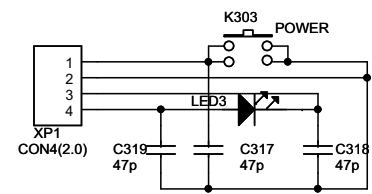
Front Board Circuit Diagram:

FROM MAIN BOARD



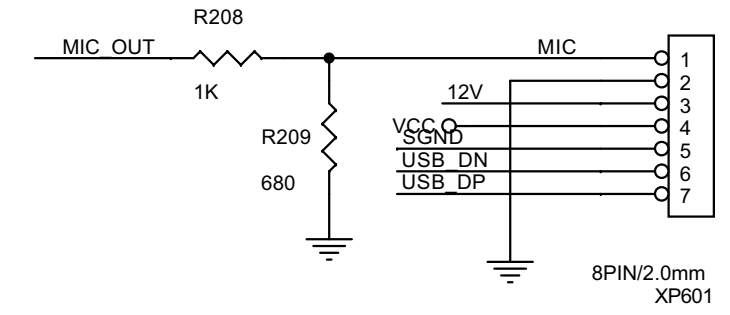
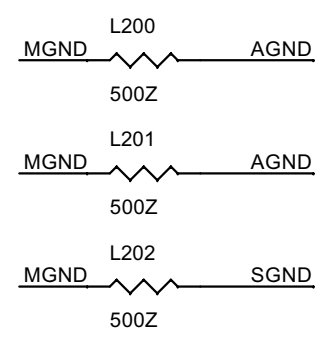
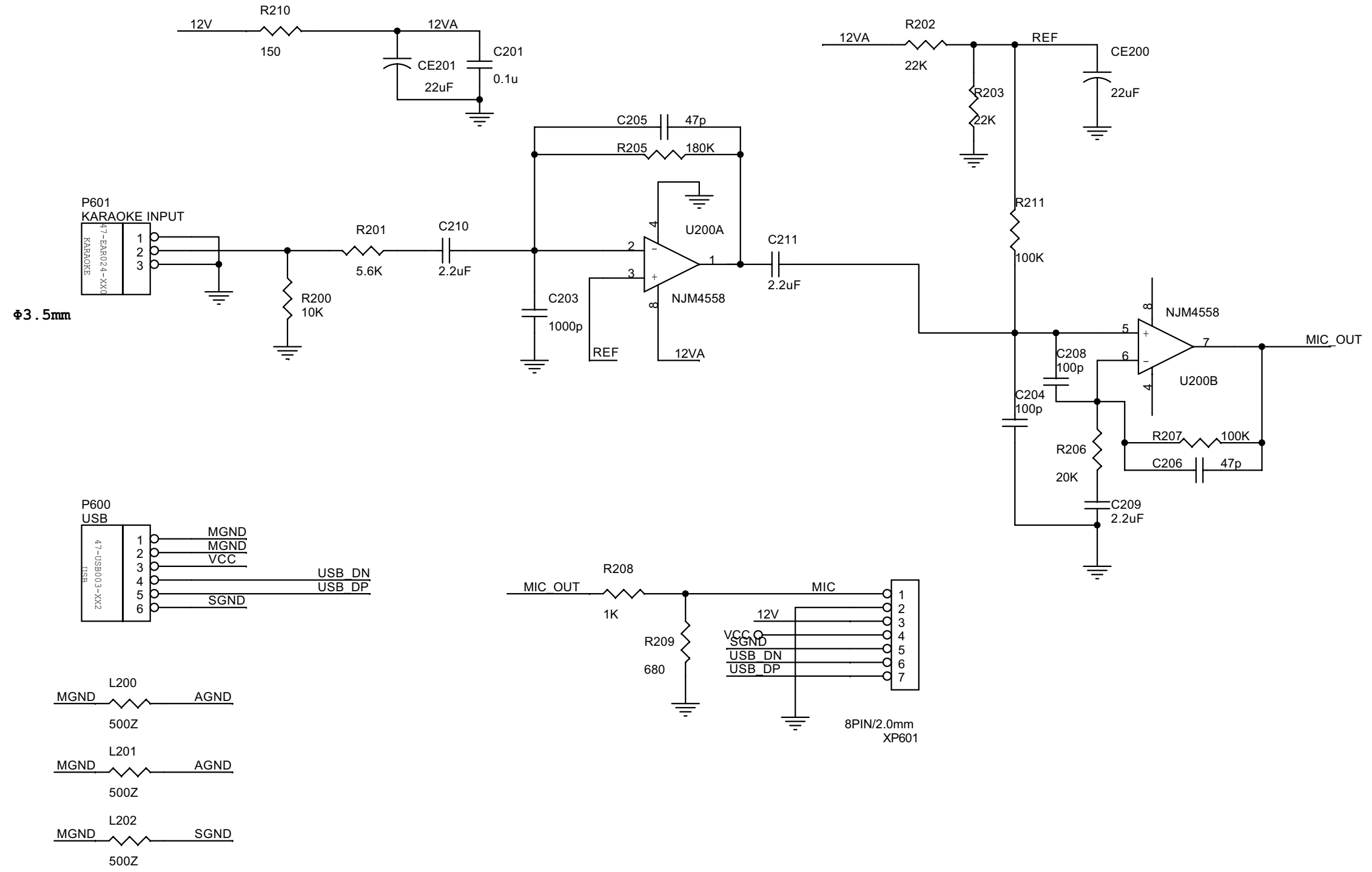
	R311	R313	R314
0.3W	N	N	Y
1W	Y	Y	N

Switch Board Circuit Diagram:



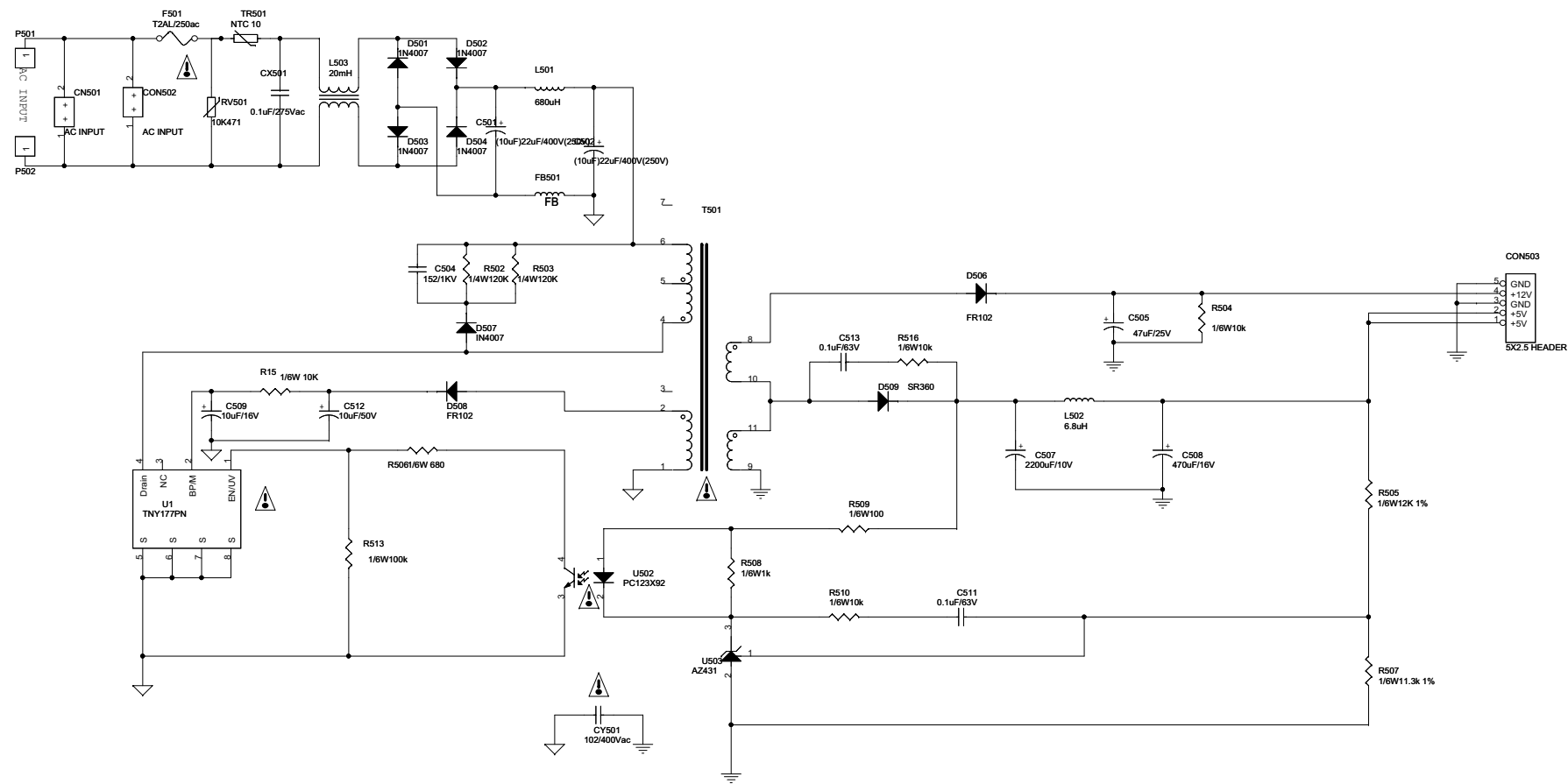
SWITCH BOARD

OK Board & USB Board Electric Diagram

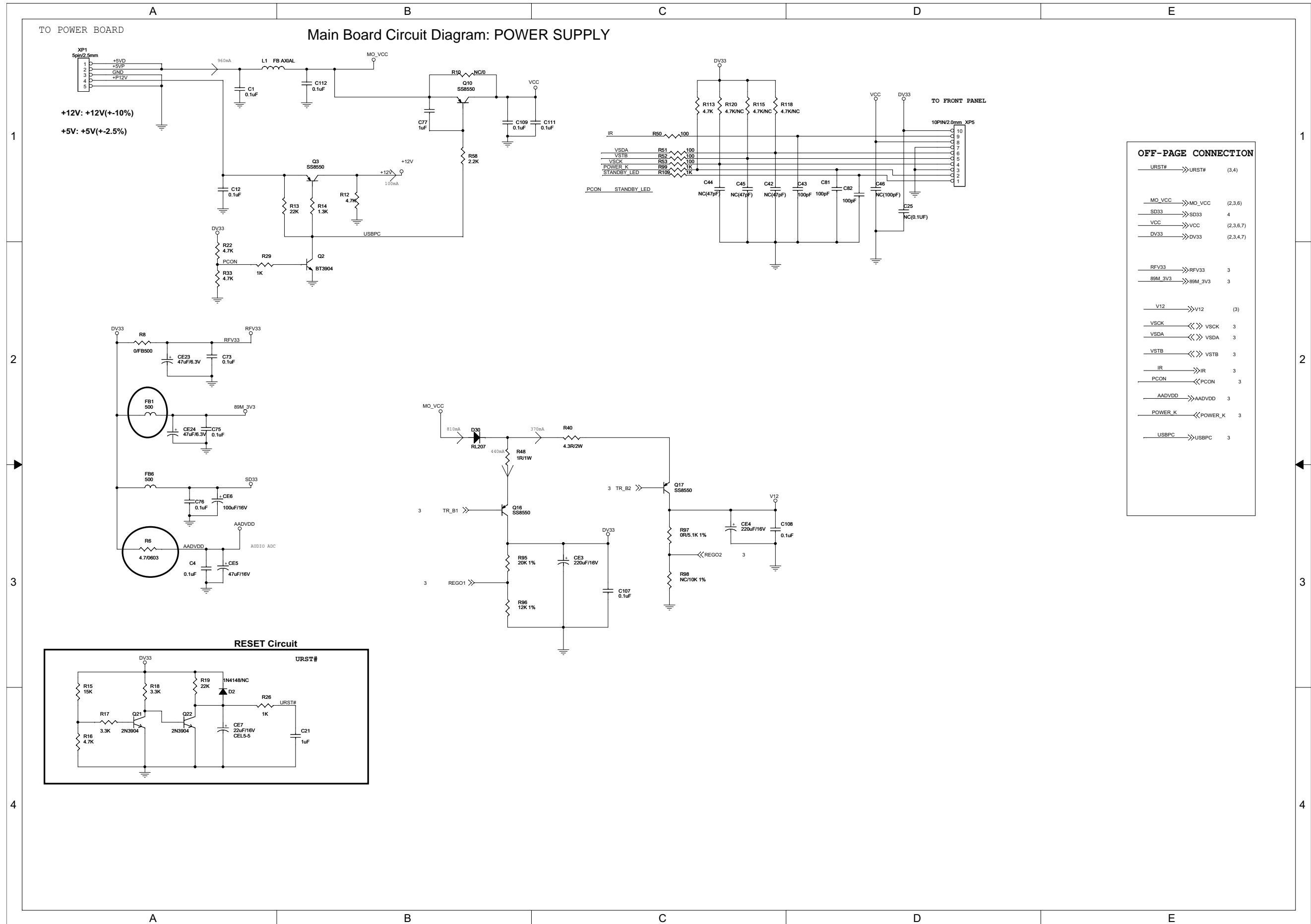


Power Board Circuit Diagram:

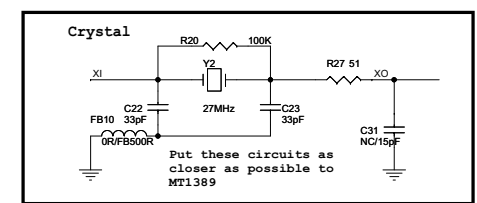
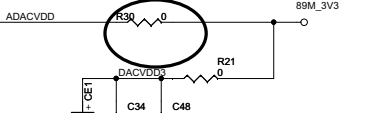
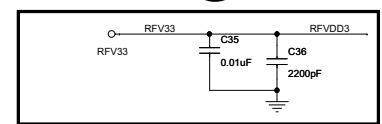
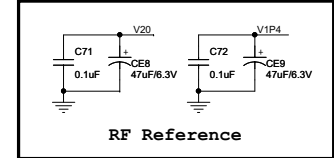
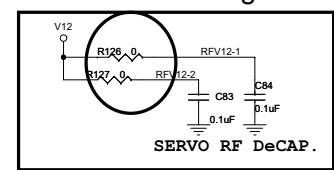
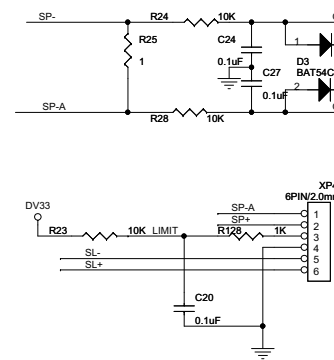
*** CAUTION :**
 THE PARTS MARKED WITH  ARE IMPORTANT PARTS ON THE SAFETY.
 PLEASE USE THE PARTS HAVING THE DESIGNATED PARTS NUMBER WITHOUT FAIL.



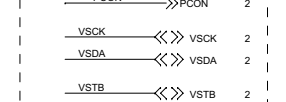
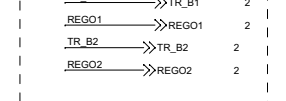
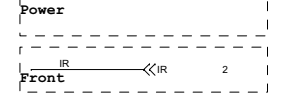
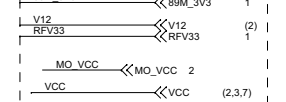
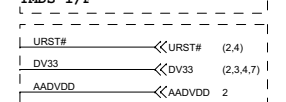
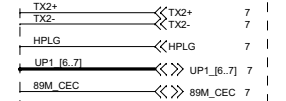
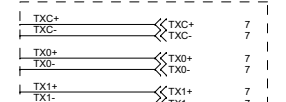
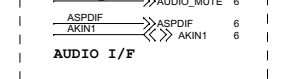
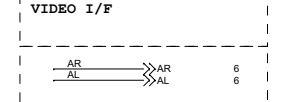
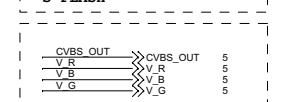
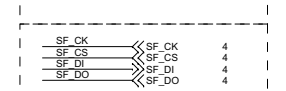
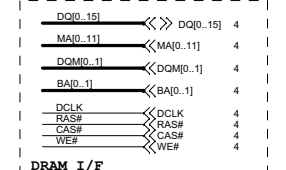
* No use the Class 1 environment management materials of SS-00259
 * All of moulding resinous, ink, paint and coating electric wire must be ordered from designated GP supplier of SONY



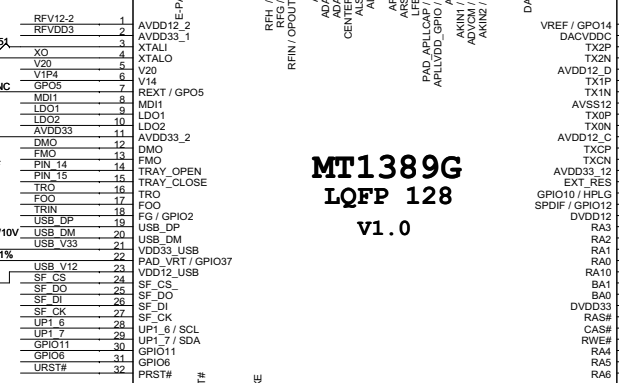
Main Board Circuit Diagram: MT1389G



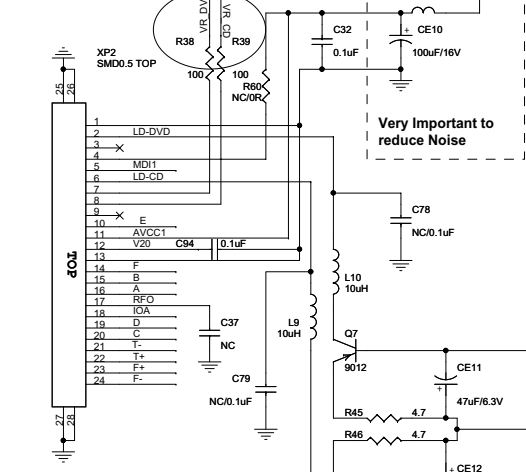
OFF-PAGE CONNECTION



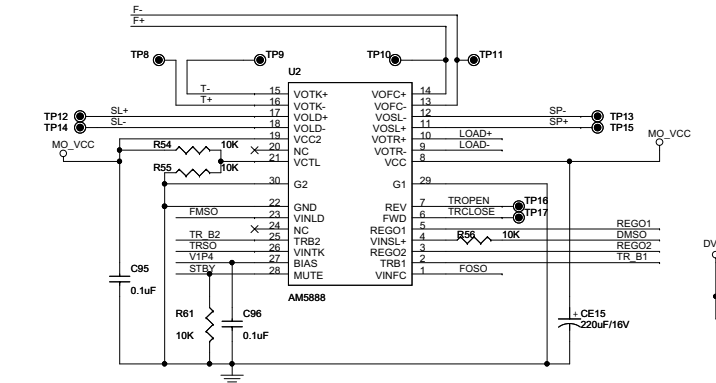
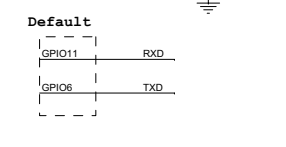
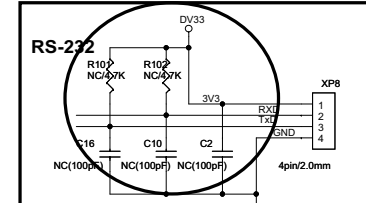
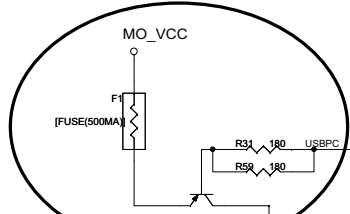
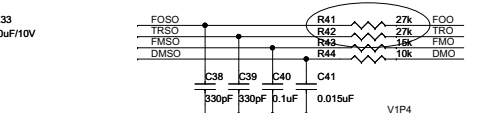
GPI36	LIMIT	TROUT
GPO5		TRCLOSE
PIN_14		VR_CD
PIN_15		VR_DVD
GPI03		89M_CEC
GPI034	IOA	TROPEN
GPI035		STBY



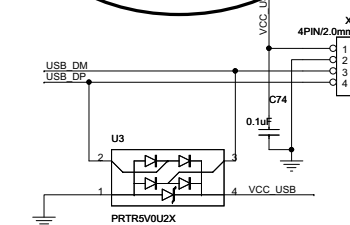
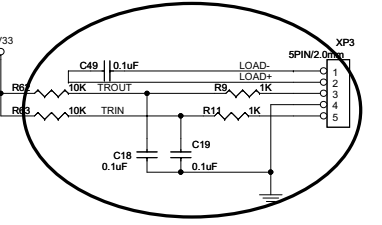
SONY 313



Very Important to reduce Noise

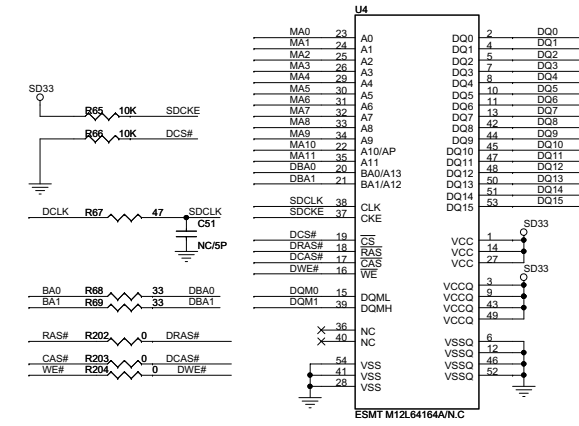


MotorDriver

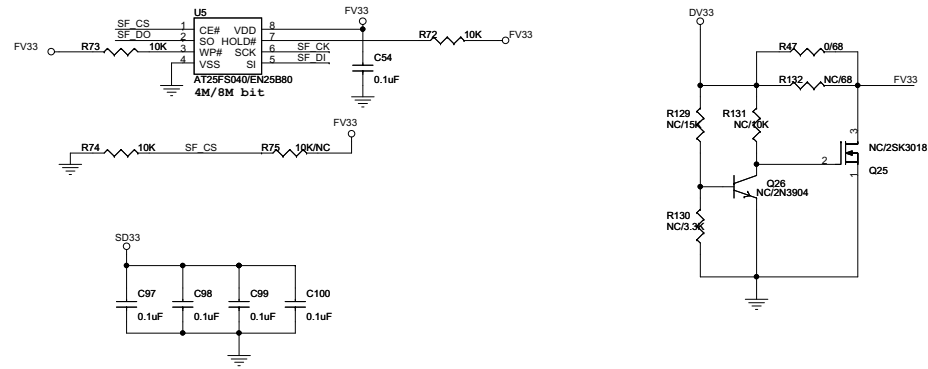


Main Board Circuit Diagram: SDRAM & FLASH

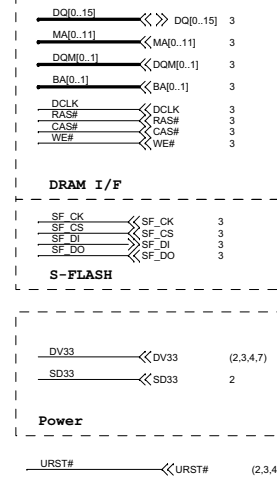
SDR_DRAM (Dual Layout)



SerialFlash

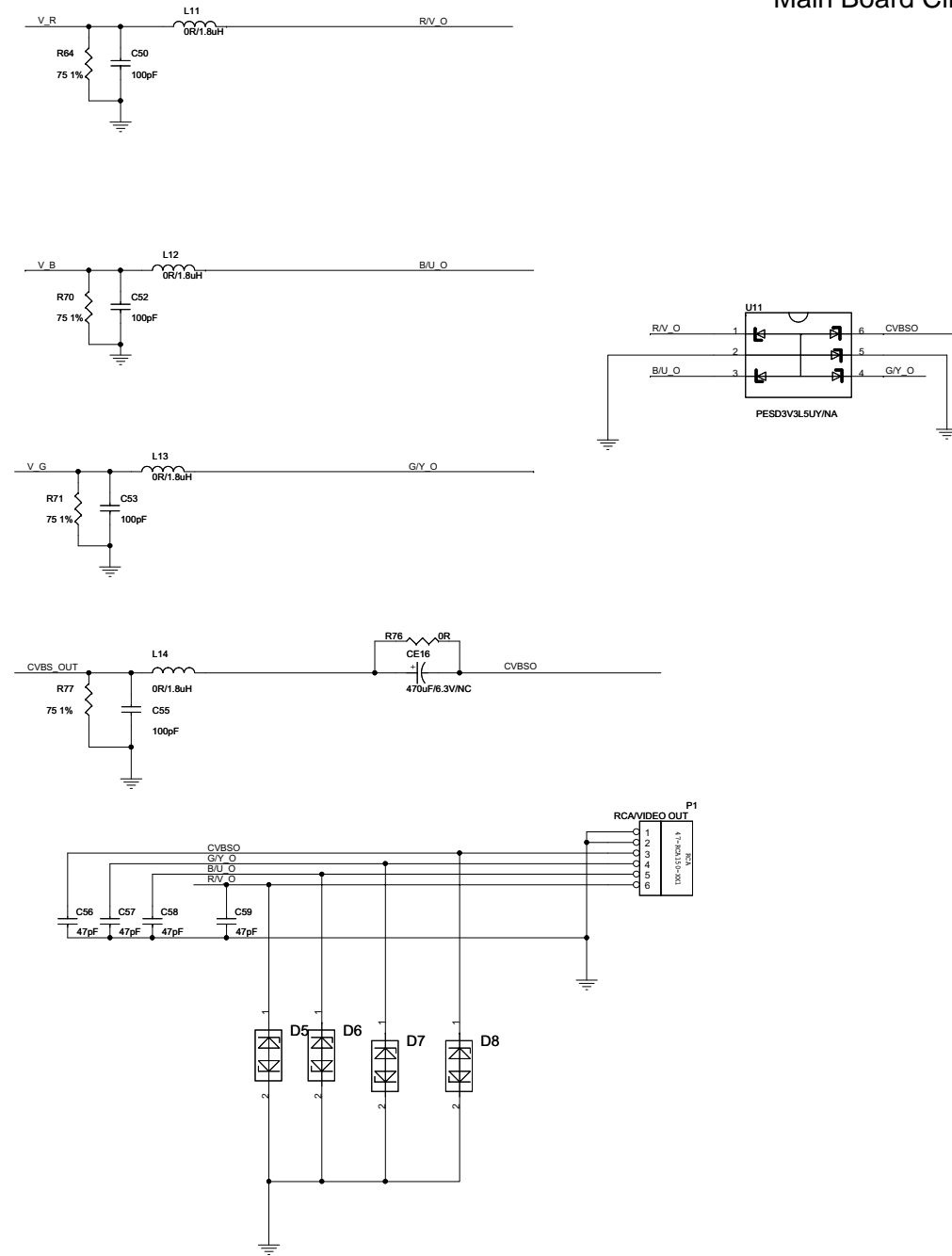
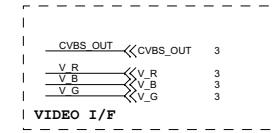


OFF-PAGE CONNECTION

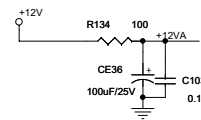
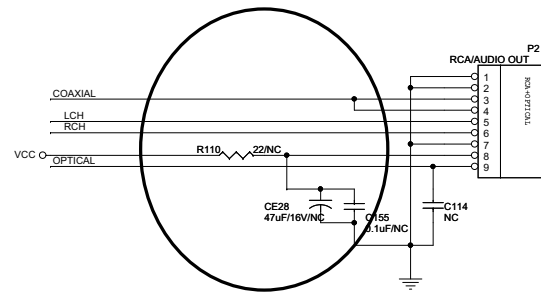
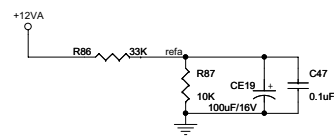
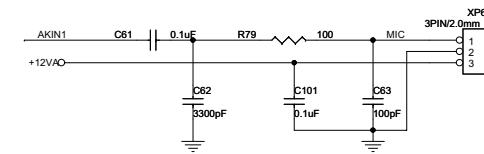
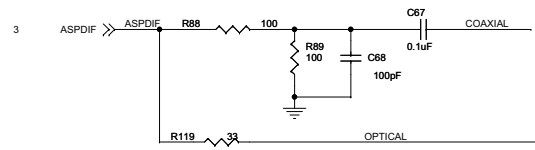
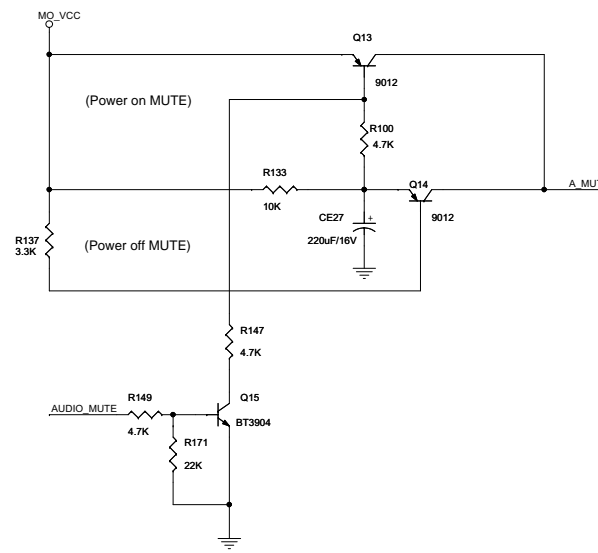
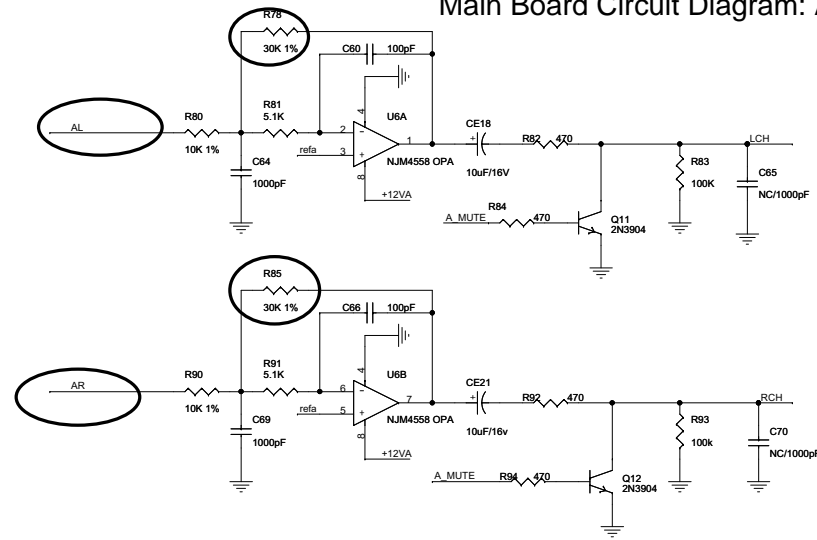


Main Board Circuit Diagram: VIDEO OUT & AV-CONNECTOR

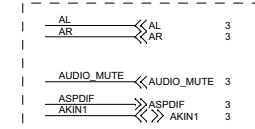
OFF-PAGE CONNECTION



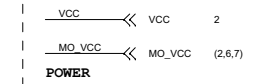
Main Board Circuit Diagram: AUDIO OUTPUT



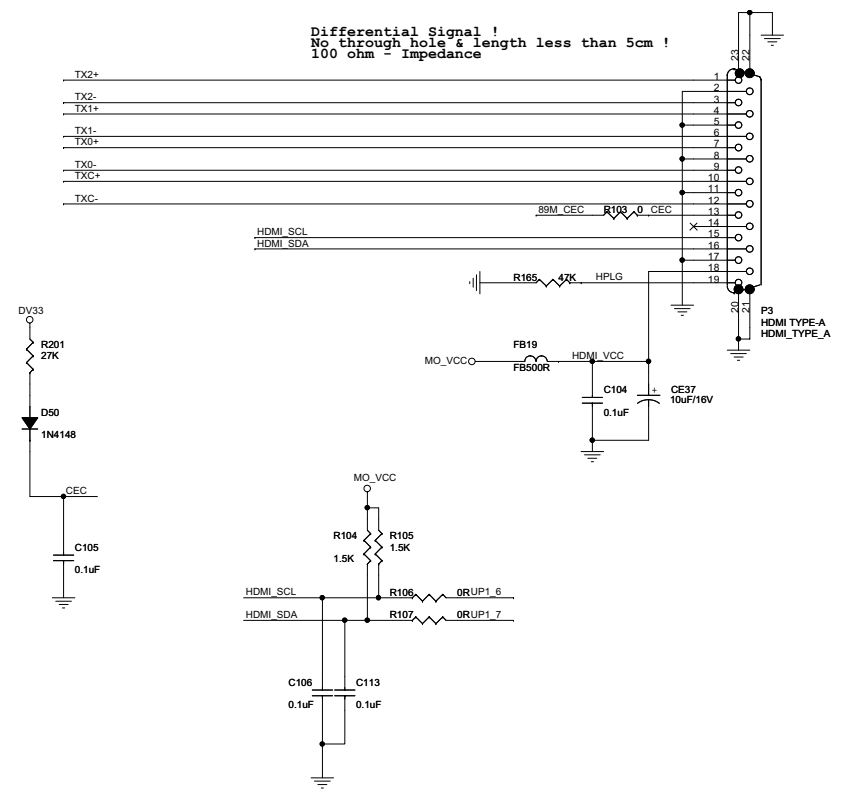
OFF-PAGE CONNECTION



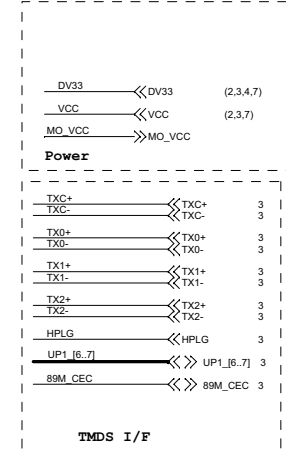
AUDIO I/F



Main Board Circuit Diagram: HDMI I/F

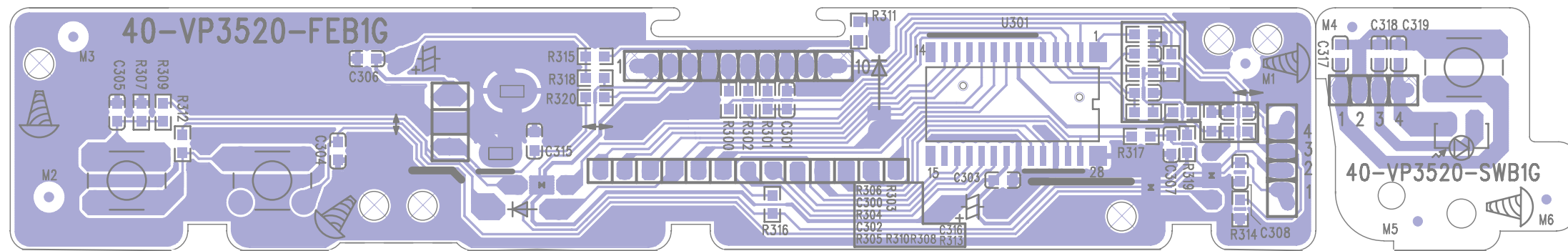


OFF-PAGE CONNECTION

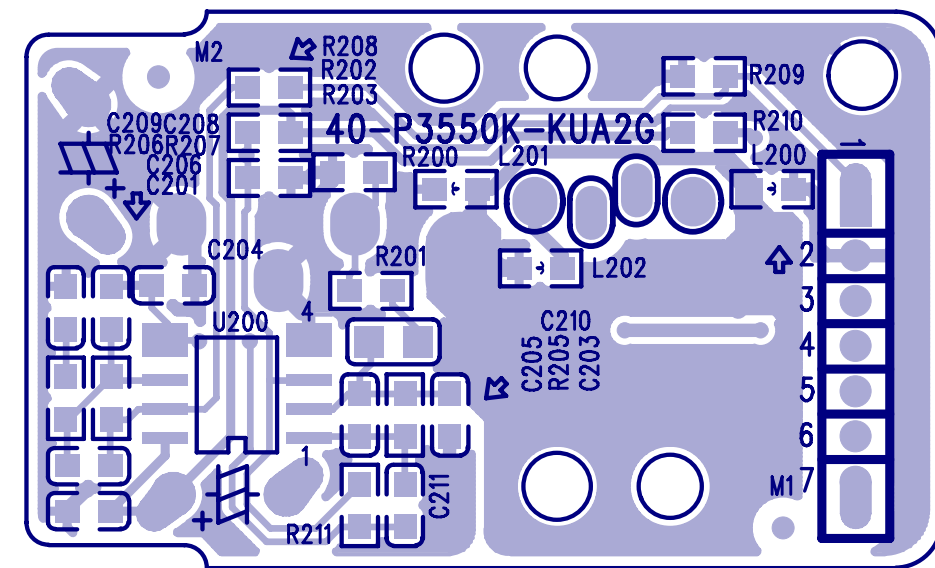
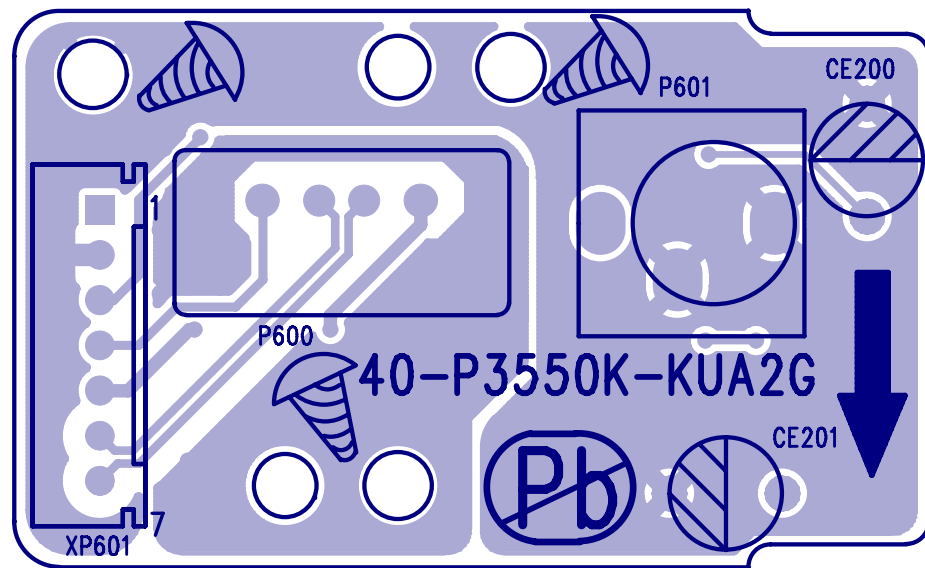


TMDS I/F

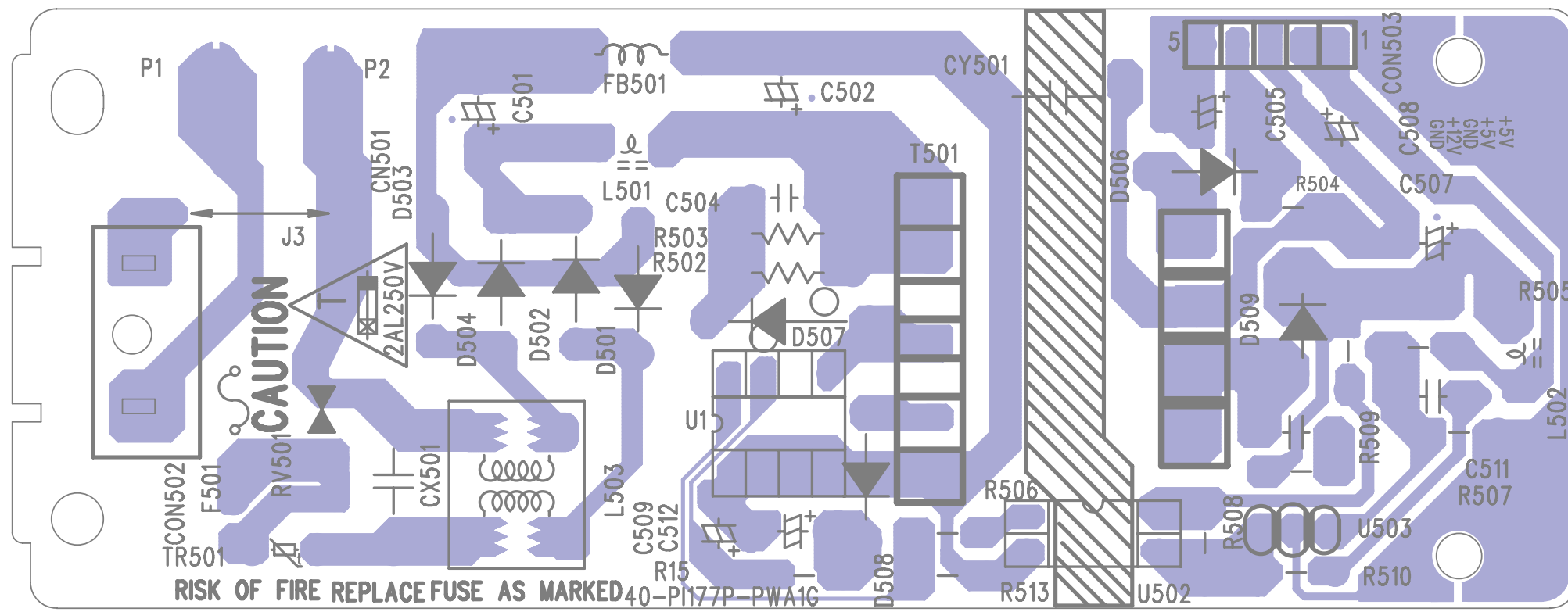
Front Board & Switch Board Print-layout (Bottom side):



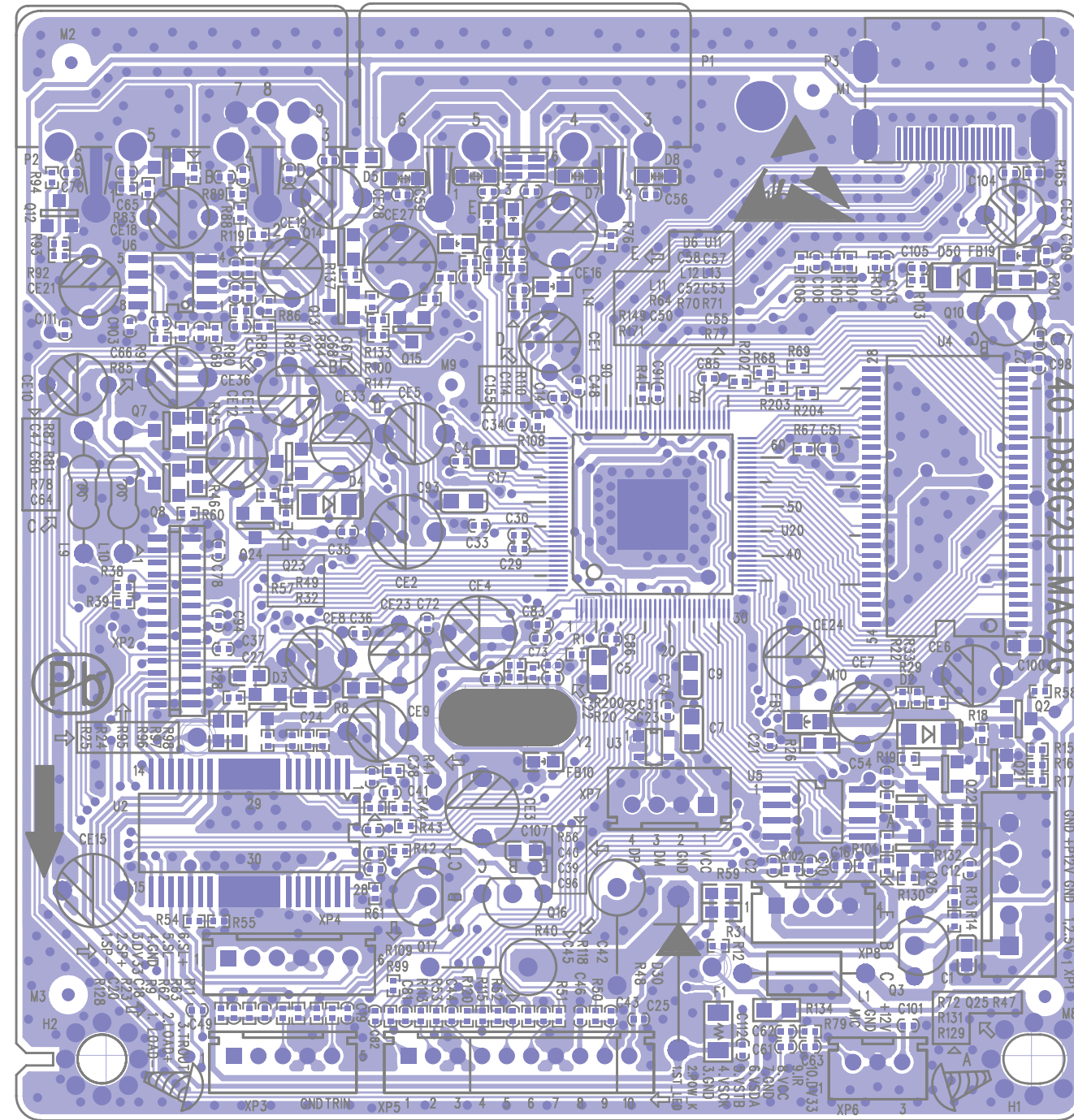
OK Board and USB Board Print-layout (Top and Bottom side):



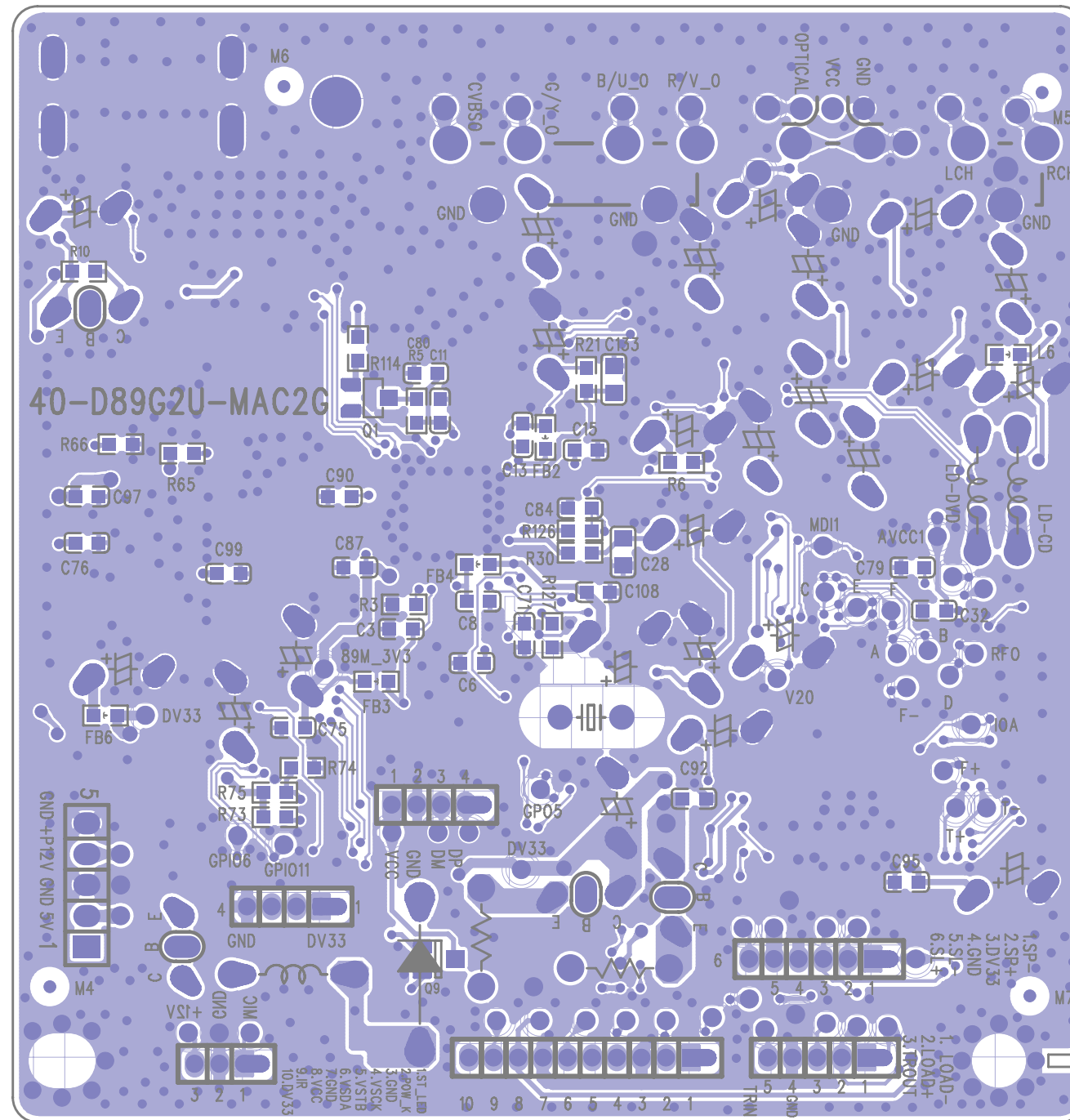
Power Board Print-layout (Bottom side):



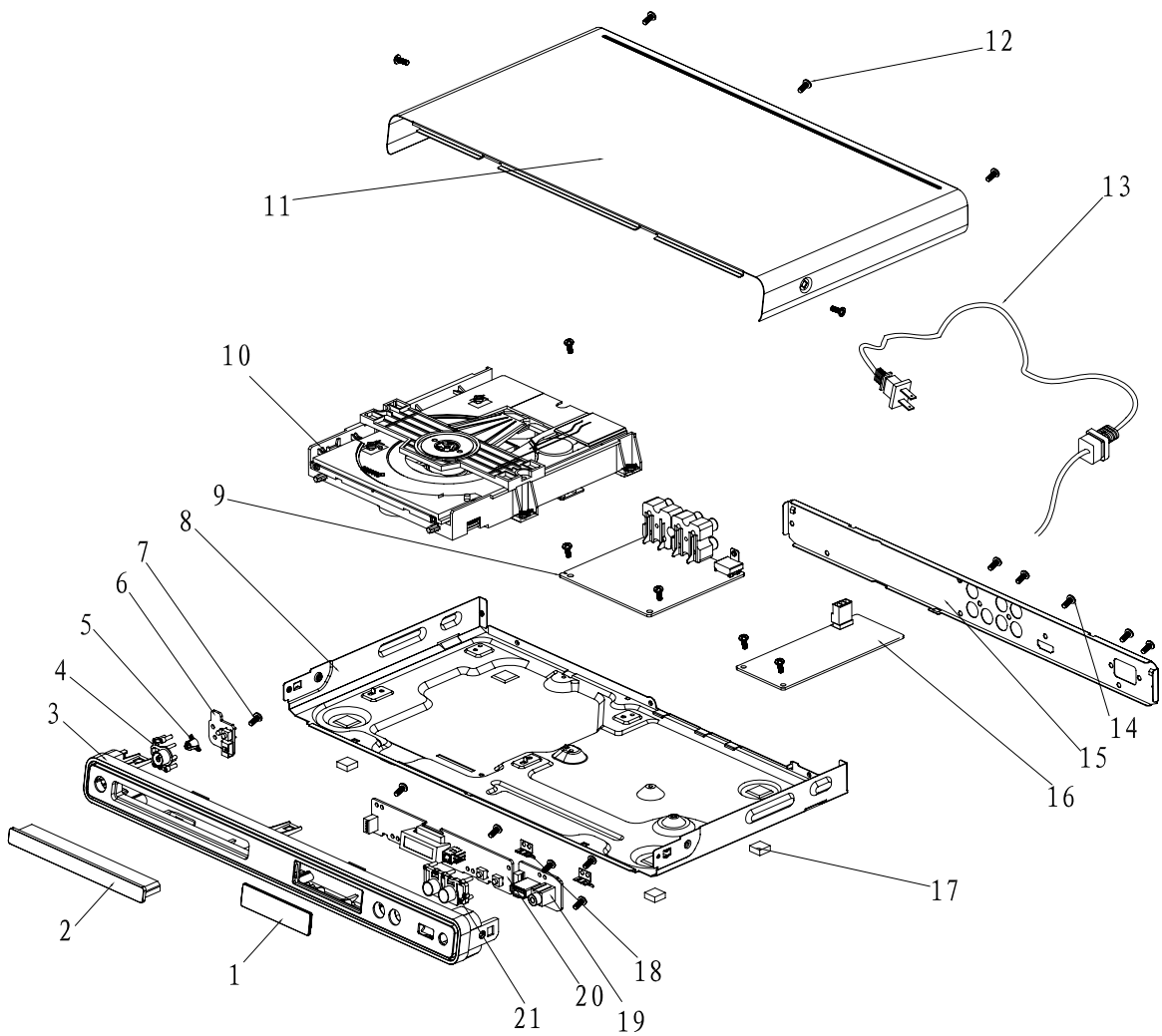
Main Board Print-layout (Top side):



Main Board Print-layout (Bottom side):



Exploded view for DVP3560K/55:



It is a general mechanical exploded view for DVP3560K/55, pls refer to the model set for detailed information.

ASSY1 includes components:1.3.4.5.21

DVP3560K/55 SERVICE PARTLIST

ELECTRICAL PARTLIST

No	12NC No.	Description	Q'ty
9	996510031366	ASSY-MAIN BOARD	1
△ 16	996510031358	ASSY-POWER BOARD	1
19	996510020951	ASSY-KU BD	1
6	996510031364	ASSY-SWITCH BOARD	1
20	996510031359	ASSY-FRONT CONTROL BOARD	1
10	996510031298	ASSY-LOADER	1
OPU	996510031294	SANYO DV38	1

ASSY-MAIN BD COMPONENT PARTLIST

NO	12NC NO.	Description	Q'ty
D3	996510009668	BAT54C	1
D4	996510014439	SMD. SWITCHING DIODE LL4148	1
D5	996510020926	IC PESD5V0S1BA	1
D50	996510014439	SMD. SWITCHING DIODE LL4148	1
D6	996510020926	IC PESD5V0S1BA	1
D7	996510020926	IC PESD5V0S1BA	1
D8	996510020926	IC PESD5V0S1BA	1
L10	996500014082	COIL CHOKE 10UH +/-10%	1
L9	996500014082	COIL CHOKE 10UH +/-10%	1
Q1	996510010922	ASM3402M/TR-LF SOT-23	1
Q10	996510009671	PNP TRANSISTOR	1
Q11	996510009669	SMD.TRANSISTOR MMBT3904LT1 NPN	1
Q12	996510009669	SMD.TRANSISTOR MMBT3904LT1 NPN	1
Q13	996510009670	TRANSISTOR SMT 3CG9012M	1
Q14	996510009670	TRANSISTOR SMT 3CG9012M	1
Q15	996510009669	SMD.TRANSISTOR MMBT3904LT1 NPN	1
Q16	996510009671	PNP TRANSISTOR	1
Q17	996510009671	PNP TRANSISTOR	1
Q2	996510009669	SMD.TRANSISTOR MMBT3904LT1 NPN	1
Q21	996510009669	SMD.TRANSISTOR MMBT3904LT1 NPN	1
Q22	996510009669	SMD.TRANSISTOR MMBT3904LT1 NPN	1
Q23	996510009670	TRANSISTOR SMT 3CG9012M	1
Q24	996510009670	TRANSISTOR SMT 3CG9012M	1
Q3	996510009671	PNP TRANSISTOR	1
Q7	996510009937	TRANSISTOR S8550LT1(PNP)	1
Q8	996510009937	TRANSISTOR S8550LT1(PNP)	1
Q9	996510022279	PNP TRANSISTOR SOT-23PBSS5320T	1
U2	996510009674	IC AM5888IC	1
U20	996510031368	IC 1389DX DECODE	1
U3	996510013349	HDMI USB ESD PYOTECTION IC	1
U4	996510009863	64M SDRAM TSOP54 M12L64164A-7T	1
U5	996510031293	16M FLASH 86MHZ MX25L1605DM2	1
U6	996510010924	Dual operational amplifier	1
Y2	996510009675	27MCL20PF	1

ASSY-POWER BD COMPONENT PARTLIST

NO	12NC NO.	Description	Q'ty
D501	996510011047	DIODE IN4007	1
D502	996510011047	DIODE IN4007	1
D503	996510011047	DIODE IN4007	1
D504	996510011047	DIODE IN4007	1
D506	996500014043	DIODE FR102 (FAST RECOVERY)	1
D507	996510011047	DIODE IN4007	1
D508	996500014043	DIODE FR102 (FAST RECOVERY)	1
D509	996500027866	DIODE SR360 3A/60V	1
L501	996510009942	COIL WIDTH	1
L502	996500032509	COIL SL0811-6R8K2R4	1
△ T501	996510031291	TRANSFORMER EE-19\BCK-03EE19	1
U1	996510012685	IC TNY177PN	1
U502	996500027867	PHOTOCOUPLER PS2561L1-1-V(WF)	1
U503	996510010419	REG DE PRECISAO AJUSTAVEL	1

ASSY-KU BD COMPONENT PARTLIST

NO	12NC NO.	Description	Q'ty
U200	996500032494	IC AS4558M	1

ASSY-FRONT CONTROL BD COMPONENT PARTLIST

NO	12NC NO.	Description	Q'ty
LED1	996510020917	J2808AG	1
REM301	996510020925	HM338-12 RECEIVER MOD H=12MM	1
U301	996510009665	IC ET6202 SOP-2	1

MECHANICAL PARTLIST

No	12NC No.	Description	Q'ty
11	996510027798	BOTTOM PLATE	1
△ 13	996510001175	POWER CORD	1
15	996510031361	BACK PANEL	1
17	996510006463	PAD	4
2	996510031362	FRONT DOOR	1
8	996510031367	TOP CABINET	1
AVCABLE	996510001106	VIDEO CABLE 1500mm	1
Assy1	996510031363	ASSY-FRONT DOOR	1
CON503	996510011060	5PINBLE TJC3-5Y/SCN-5P L=70MM	1
HDMIL	996510031365	HDMI CABLE 1.5M	1
PSOCKET	996510020885	POWER SOCKET transition	1
RC	996510031299	REMOTE CONTROL	1
XP2	996510001168	24PIN HS	1
XP3	996510004063	CABLE PH-5Y/PH-5Y L=130MM	1
XP4	996510021448	6PIN HS	1
XP601	996510020962	7PIN CABLE WITH SHIELD(XP7:	1
XS301	996510001530	CABLE 10P HS	1

SCREWS LIST:

No	12NC No.	Description	Q'ty
7	—	S/T SCREW B 2.6 X 8 BF	6
12	—	S/T SCREW B3 X 6 BF	9
14	—	S/T SCREW B 3 X 7 BF	5

REVISION LIST

Version 1.0

* Initial release for DVP3560K/55